



Iowa Lincoln Highway Association

Fall 2020 Newsletter | Volume 25, No. 3

President's Corner

by Mary Helen Preston

I don't know if anyone else is ready to tag out of 2020 but I certainly am. First, COVID triggering cancellation of so many activities and turning some into virtual events. Activities, festivals, and conferences just aren't the same as participating in person. Then on August 10, we encountered an unprecedented event - a derecho! A land hurricane leaving a path of destruction across Iowa.

Let me jump back to COVID. So many of our attractions are feeling and felt the impact of the virus. I'm sure there are others but the ones jumping to mind are: the closing of Reed Niland Corner in Colo (but soon to be under new management) and most recently King Tower Café in Tama. The Lincoln Highway and Jefferson Highway Conferences were cancelled. Then you have roadside attractions, like Youngville Café which didn't open this season and Preston's Station which had a significant drop in visitors.

If COVID wasn't enough, the double whammy occurred with the derecho; leaving us reeling and now recovering. Youngville lost its garage; King Tower Café lost some of its tower lights; Preston's lost chimneys, a window and damage to roofs and Belle Plaine's Welcome sign on 30 Highway and Highway 131 was crushed and tossed like a pop can across the road. I'm certain there are more historic attractions which suffered damage since the derecho travelled along the Lincoln Highway. Derecho took something from all of us but as Iowans, we are IOWA STRONG and will overcome the destruction handed us.

I'm posing this to the group, what as an Association can we do to promote Iowa, the Lincoln Highway, and our attractions as travelers plan for daytrips, long weekends and vacations? I have a feeling COVID is going to have an effect on us for some time yet. Janice and her team do a great job with social media. Travel Iowa has a number of our towns and attractions listed, but what are some out of the box things we can do to promote US? We've worked too hard to preserve and promote the Lincoln Highway and keep it alive. I certainly don't want our veins to dry up.

It's time to rebuild and recover. We are IOWA STRONG and PROUD.

Niland's Cafe and Motel Update

by Jan Gammon

In a space of just a few days, Niland's Café closed and then days later the City of Colo announced they had new proprietors for the Café and Motel. Names of the new managers have not been released, but the Lincoln Highway Association is pleased that someone is willing to step-up and continue operating this iconic destination.



We thank Charity and Arlo Starbuck for their 19 months at Niland's Café and we know it was a struggle at times due to COVID-19 and construction at the intersection of Highway 65 and the Lincoln Highway. The couple closed their doors on August 5, 2020. The property is owned by the City of Colo and the Colo Development Group oversees the property and they wasted no time in finding replacements.

We await an official announcement for a new opening day!

City of Lowden's Mural

by Jan Gammon



While traveling the Lincoln Highway a few weeks ago, we spotted a new mural painted in Lowden at the intersection of the Lincoln Highway and the Hoover Highway. The mural has bright, vibrant colors and the Lincoln Hotel was quick to point out they are featured in the letter "D". Each letter depicts something related to living in Lowden.

There are 4 University of Iowa students who are working in various communities to create public art through murals. Katlynnne Hummell is working in Clarence and Lowden, both Lincoln Highway communities.

Mission Statement

The Lincoln Highway Association shall identify, preserve, interpret and improve access to the Lincoln Highway and its associated sites, pursue the appropriate measures to prevent further deterioration, destruction or alteration of the remaining sections, publicize and seek public awareness of its goals and activities for preserving and developing the LH, facilitate research about the LH, and publish a magazine for articles and news of activity relevant to the LH, work with local communities and businesses to promote the LH as a tourism destination, and be exclusively charitable and educational within the meaning of the Internal Revenue Code.

ILHA Officers, Board of Directors, County Consuls, and Staff

President	Phone	Email
Mary Helen Preston	(816) 868-3336	mary@prestonsstation.com
Vice President		
Open Position		
Secretary		
Jan Gammon	(515) 232-0048	lincolnhighway@prrcd.org
Treasurer		
Joyce Ausberger	(515) 386-4521	bobjoyce@netins.net
State Director		
Dean Parr	(319) 366-0552	drparr51@gmail.com
Membership Coordinator		
Dean Parr	(319) 366-0552	drparr51@gmail.com
Noble Sojourner		
Lyell Henry		disorg@mchsi.com
Artist in Residence		
John Fitzsimmons	(515) 432-3697	seanfitz50@gmail.com
Newsletter Layout & Webmaster		
Jackson Donels		jdonels@prrcd.org
Director Emeritus		
Bob Ausberger	(515) 386-4521	bobjoyce@netins.net
Byway Coordinator & Newsletter Editor		
Janice Gammon	(515) 232-0048	lincolnhighway@prrcd.org

County Consul	Phone	Email
Clinton		
Cathie Nichols	(563) 659-8050	scampcat@iowatelecom.net
Cedar		
Joe Goodlove	(563) 349-6622	joeiowaLH30@fbcom.net
Linn		
Rex Martin		rex221b@gmail.com
Benton		
Mike Kelly	(319) 472-5183	videoptraitsofiowa@gmail.com
Tama		
Allan Richards	(641) 484-4000	allanmaxrichards@aol.com
Marshall		
Harlan Quick	(641) 483-2440	hmquick@partnercom.net
Story		
Carroll Stokesbary		carrbary@netins.net
Boone		
John Fitzsimmons	(515) 432-3697	seanfitz50@gmail.com
Greene		
Joyce Ausberger	(515) 386-4521	bobjoyce@netins.net
Carroll		
Barbara Hackfort	(712) 792-1512	bjhackfort@westianet.net
Crawford		
Open Position		
Harrison		
Kathy Dirks	(712) 642-2114	kdirks@harrisoncountyparks.org
Pottawattamie		
Eddy Hedegaard		ejskj@msn.com

1913 Dedication of the Lincoln Highway in Carroll

by Barbara Hackfort, Carroll County Consul

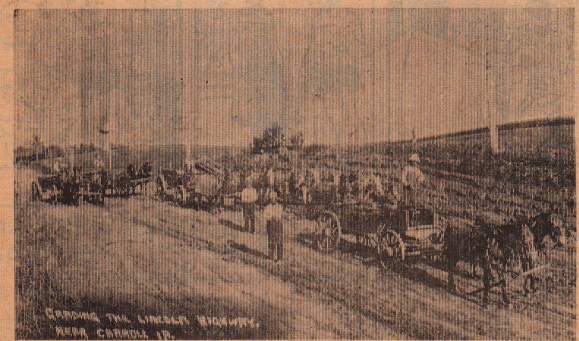
It was not difficult to convince people in the early 1900s that good roads were an absolute necessity, but what was difficult was deciding who was to pay for them. Even Henry Ford, unlike most of his colleagues in the auto industry, thought that the government should pay for the roads and levy taxes to pay for them. Fortunately, there were many people who disagreed with that attitude, and supported the many promotions that advocated improved roads using differing sources to fund them.

One of the promotions encouraged every community along the newly designated Lincoln Highway to hold a formal dedication of the event, and Glidden and Carroll responded to the request. Halloween was chosen as the day for the festivities, which began in Glidden at 7:00 P.M. The Glidden Band played, fireworks were launched, and fifty cars then drove over to Carroll where another, more elaborate program was to begin. At 7:30 P.M. decorated cars, bands, and "just walkers" formed a parade winding around the downtown streets. Three speakers were engaged for the occasion: Dr. Williams from Manning, who spoke about changes in the roads since his arrival to the area; Fred Von Erdwyk, an expert on the plans for the transcontinental road; and Judge B.I. Salinger, a prominent citizen and popular orator in the community. Music was included in the program with children singing, and

the Manning Liederkrantz (a German singing choir) performing. The evening ended with more fireworks. One of the local newspapers reported that there were more than a thousand autos in Carroll, and prizes of \$5, \$3, and \$2 were awarded to those that were the best decorated.

By March of 1914, the Carroll County Board of Supervisors set aside \$20,000 to improve the highway in the county, and appointed a committee to superintend and raise funds for the project. Problems such as uncooperative weather, insufficient sources of labor, and inadequate equipment would delay construction in the county, but, overall, by 1917 the Lincoln Highway claimed to be the best marked road in the United States.

Carrolland Memories



Horsepower was utilized when the old Lincoln Highway was graded near Carroll many years ago. The scene is three quarters of a mile west of Carroll on Old Highway 30. This picture was made by the old Carroll Postcard Com-

pany and is owned by R. E. McCoy. The old postcard firm recorded many historical events of Carroll and surrounding communities. These pictures are prized today.



Nancy & Ronny Hauser

Hours:
M-F 10:30 AM - 5:30 PM
Sat 10:00 AM - 4:00 PM
LincolnHwyTrdingCo@gmail.com

110 W 6th St
Carroll, IA 51401
712-792-0011
Chris cell 515-238-0755

The Dairy Mart



**Good Food
Better Ice Cream**

Chris Hinnert

Located next to Hwy 30
329 East 9th Street
Glidden, Iowa

Open March to September
Dine In or Carry Out

Derecho Damage at Youngville

by Mike Kelly, Benton County Consul



The damage from the August 10, 2020 Derecho windstorm to Youngville and the surrounding properties indicates that Youngville bore the full brunt of the storm. The Lincoln Highway Corridor in Iowa, especially in Benton County, was in the direct path of the storm's fury. It appears the newly completed cloverleaf may have served as a windbreak and saved the historic property from greater destruction. The cafe appears to have sustained damage, but it will need a more thorough examination to determine the extent beyond the observable shingles, gas pump glass, the kiosk, signs, and the damaged tree tops along with literally anything that wasn't bolted down outdoors. The garage at Youngville, which also has National Register designation, blew into the kiosk and was severely damaged. In the meantime, the Benton County Preservation Commission has relayed information on several Emergency Grants opportunities - this coming immediately following our application for COVID-19 nonprofit assistance.

Derecho Damage along the Lincoln Highway



Interpretive panel installed at the Tama Bridge is still standing after the derecho. The bridge is still intact as well. Both the bridge and the brick interpretive structure are both missing some light globes, but local say the bridge globes were missing prior to the storm.



The beloved grain bin with the big "Belle Plaine" welcome took a hit during the derecho in August. A post on the Lincoln Highway Association's Facebook page of what it looked like before and after the storm received 36 comments; 18,596 engagements; reached 91,200 people; and was shared 932 times!



Preston's Station Historic District lost the front window to the station and had some roof damage to the station and the garage. Mary and Garry were busy cleaning up brush and will have a structural expert assess any further damage.

Sidewalk Art in Jefferson

by Jan Gammon

Jefferson, Iowa has added more art to their streets! Or should we say, art on the sidewalk? Roger Aegerter has been busy this June and July. He painted a to-scale Lincoln Highway extending from the southeast corner of the Greene County Courthouse square, past the Thomas Jefferson Memorial Gardens to the Greene County Historical Museum. The 15-inch green stripe turns and bends as the route does across the nation. He even has some cities marked along the route.

What was his inspiration, you ask? From the Greene County Iowa Historical Society's webpage: "Roger Aegerter has long been intrigued by the historic Lincoln Highway. Maybe it's because for 42 years, he has lived just a half-block off the highway's route as it goes through Jefferson. Over that time, he's driven nearly the entire route, from its beginning in New York City to its finish in San Francisco. And now he's painted it! Aegerter, a former art teacher, school administrator, working artist and for eight



years the executive director of our Greene County Iowa Historical Society, had been thinking 'a couple of years' about doing a public art project on the highway, and decided in March it was time to act. He talked to the City of Jefferson streets department officials about the idea, got their permission and arranged to borrow the paint sprayer they use for traffic markings on local streets."

For more information and photos go to:

<https://www.greenecountyiowahistoricalsociety.org/stories-articles/roger-aegerters-fun-artwork-lets-you-walk-the-full-length-of-the-lincoln-highway/>

The James H. Andrew Railroad Museum and History Center

at the Boone and Scenic Valley Railroad

November 1 through May 22

Monday - Friday 10 am - 4 pm

Saturday Noon - 4 pm

Closed Sunday

May 23 through October 31

Sunday - Thursday 10 am - 4 pm

Friday and Saturday 10 am - 5 pm



www.iowarailwaymuseum.org

Visit one of Iowa's most interesting railroad collections

Museum Admission included with most train ride tickets!



The Historic Lincoln Hotel

The perfect place to escape the hectic pace, reconnect with a loved one and step back in time.

(563) 484 - 6645

408 Main St. Lowden,
IA 52255

lincolnhoteliowa.com

Lincoln Highway Heritage Byway Update

by Jan Gammon, Coordinator

We thought this COVID-19 year would be a challenge, and it has been, but it seems we are busier than ever. The National Scenic Byway application was submitted and we should hear sometime this fall if selected for such an honor. Nebraska's Byway applied as well and we heard that Ohio might have too. Illinois already is a National Scenic Byway, so adding 3 more states with this distinction would be fantastic!

Along those same lines, we are working on an American Society of Civil Engineering Historic Landmark Award and hope to have that submitted soon. It takes about a year for their panel to review!

Our biggest project this year is interpretation. We received a \$10,000 grant from the Union Pacific Railroad Community Ties Giving Program. This is about half of what we needed to create 10 interpretive panels in Woodbine, Denison, Arcadia, Jefferson, Marshalltown, Belle Plaine (Preston's), and Clinton. Locations are being asked to contribute to the project and we are well on our design process for several of the panels and bases. We are also working on a huge (4' x 8') replacement panel for the Harrison County Historical Village and Welcome Center.

In September, Travel Iowa should be rolling out a Byways Passport program. It will work much like the State Parks program, with participants able to win small prizes.

We received an Iowa Tourism grant to create two 2-minute videos about Breweries, Wineries, and Distilleries along the Lincoln Highway corridor in eastern Iowa. A University of Iowa graduate student working on a Master of Fine Arts degree is doing the filming and editing. The filming process has started in August and editing during the fall semester. One video will be in the Clinton/LeClaire area and the other in the Cedar Rapids/Iowa City area. The videos will be on the Travel Iowa website, the Lincoln Highway Heritage Byway website and Facebook page, the National Scenic Byway Foundation Facebook page, and available on participating business websites and Facebook pages.

So even with the Iowa State Fair, conferences, and all the other events we were planning on attending or participating in being cancelled, we have stayed very busy. Zoom meetings, emails, and conference calls are the new normal for us as we continue to do business. We will see what 2021 brings!

Interesting Information from the 1918 Iowa State Highway Commission

Iowa Highway Commission Service Bulletin January 1918 Vol VI, No 1

The last wooden culvert on the Lincoln Highway through Greene County is being torn out and replaced with concrete construction. This completes the permanent of the bridging of the highway across the county.

Iowa Highway Commission Service Bulletin Vol VI. No.5 has the traffic counts

Interestingly, the traffic counts kept in 1918 by the Iowa Highway commission were listed by “auto” and “horse drawn.”

Traffic Accidents

Traffic accidents and deaths were recorded by the State Highway Commission by month. Person's name, town, and reason for death were recorded. Among the reasons were; “going over an embankment,” “hit by auto,” and “hit by train”. But the ones we hadn't heard before were “car turned turtle” and “car skidded and turned turtle.” When did they quit using that language?

AVERAGE DAILY TRAFFIC				
County	Motor Driven		Horse Drawn	
	No. of Vehicles	Percentage	No. of Vehicles	Percentage
Cerro Gordo...	981	98	12	2
Woodbury	187	84	37	16
Jefferson	158	81	36	19
Delaware	369	88	63	12
Buchanan	413	81	100	19
Ringgold	109	81	26	19
Marion	183	70	76	30
Decatur	187	78	52	22
Johnson	262	78	73	22
Calhoun	98	62.0	46	32.0
Warren	216	88	31	12
Dallas	302	89	36	11
Webster	427	91.0	42	9.0
Harrison	317	83.4	63	16.6
Mills	248	89.5	29	10.5
Montgomery ..	266	85.0	47	15.0
Clinton	235	85.2	41	14.8
Average traffic per total No. of stations...	292	86.1	47	13.9

2020 Summer Derecho in Iowa

Can all the King's
horsemen and all
the King's men put
Youngville garage back
together again?



**The next ILHA meeting will be held virtually through ZOOM on
Saturday, October 10th at 9:30 AM.**

President Mary Preston will set up the meeting and a link will be emailed out to consuls and officers. If you are not a consul or officer and wish to join the meeting, please notify Mary and she will get the link out to you. See inside this newsletter's front cover for her contact info. Let Jan Gammon or Mary Preston know if you need help downloading ZOOM onto your computer. You will need a camera on your computer or a webcam to join the video. Please have everything setup and tested prior to the meeting.

If you are not able to join via ZOOM on your computer, you may also join by phone. Let Mary know and she can get you the phone number and code to use when calling. This is not a free call, so it may count against your phone minutes or as a long-distance call.

Upcoming Iowa LHA Meetings

January 9, 2021: TBD

FIRST CLASS

Place
Stamp
Here

Iowa Lincoln Highway Association
P.O. Box 224
Grand Junction, Iowa 50107

