



# Along The Lincoln Highway



Volume 20, Number 1

Spring 2015

## THE NEWSLETTER OF THE IOWA LINCOLN HIGHWAY ASSOCIATION

### President's Corner

By Deb Rothmeyer, President

First, I would like to thank everyone for coming to the January meeting in State Center, and also for your support and understanding.

There is not a lot going on right now. I have been working with Jeannie Sieck, Lincoln Highway Bridge Park Tama-Toledo, by sending a support letter from Lincoln Highway Association and just helping her with ideas.

I like the idea of listing the farmers market along the Iowa Lincoln Highway. It will bring people into the area.

The 2017 conference is coming along great and I will have more information in the coming months for you. I am looking forward to seeing everyone for the April meeting in Council Bluffs.



### Upcoming Iowa LHA Meetings

|                  |                |
|------------------|----------------|
| April 11, 2015   | Council Bluffs |
| July 11, 2015    | Clinton        |
| October 10, 2015 | Denison        |
| Jan, 2016        | TBD            |

### Table of Contents

Pg. 1 President's Corner  
Byway Updates

Pg. 2 Officer List  
National Conference

Pg. 3 Mystery Place

Pg. 4 Lincoln Highway Bridge  
Corridor Management Plan

Pg. 5 Featured Upcoming Events

Pg. 6 January Meeting Recap  
Meet the LHHB Intern

Pg. 7 Events on the Lincoln

Pg. 8 Farmer's Markets

### Lincoln Highway Heritage Byway Updates

By Jan Gammon  
Prairie Rivers of Iowa



In January, 2015, I started as the new Lincoln Highway Heritage Byway Coordinator at Prairie Rivers of Iowa. So let me introduce myself.

My background has been in historic preservation. I served as the coordinator for the Nevada (Iowa) Historical Society and served on the Nevada (Iowa) Historic Preservation Commission for several years. I helped the Society manage their museum displays, Victorian house, and 8-acre farm site- complete with a large home, carriage house, and several outbuildings. The Commission conducted historical surveys of properties in the community (including the Lincoln Highway). In 2003, during the sesquicentennial festivities for Nevada, based on survey information, the downtown was placed on the National Register of Historic Places.

I have two grown children and my husband works for the City of Ames in the Engineering department. We have lived in Nevada, Iowa since 1980. In 2006, I returned to Iowa State University for a Master of Public Administration degree, which I received in 2009. My goal was to work in the areas of economic development, heritage tourism, and historic preservation. And now I have found the perfect position! In my first few days, I attended my first Iowa Lincoln Highway Association meeting in State Center...

*Continued on page 7*

The Lincoln Highway Association shall identify, preserve, interpret and improve access to the Lincoln Highway and its associated sites, pursue the appropriate measures to prevent further deterioration, destruction or alteration of the remaining sections, publicize and seek public awareness of its goals and activities for preserving and developing the LH, facilitate research about the LH, and publish a magazine for articles and news of activity relevant to the LH, work with local communities and businesses to promote the LH as a tourism destination, and be exclusively charitable and educational within the meaning of the Internal Revenue Code.

**ILHA Officers, Board of Directors,  
County Consuls, and Staff**

**Officers**

|                       |              |                               |
|-----------------------|--------------|-------------------------------|
| <b>President</b>      |              |                               |
| Deb Rothmeyer         | 712-263-8356 | debbierothmeyer55@outlook.com |
| <b>Vice President</b> |              |                               |
| Sean Fitzsimmons      | 515-432-3697 | seanfitz50@gmail.com          |
| <b>Secretary</b>      |              |                               |
| Jan Gammon            | 515-232-0048 | jgammon@prrcd.org             |
| <b>Treasurer</b>      |              |                               |
| Joyce Ausberger       | 515-386-4521 | bobjoyce@netins.net           |
| <b>State Director</b> |              |                               |
| Dean Parr             | 319-366-0552 | drparr@mchsi.com              |

**Board of Directors  
(County Consuls)**

|                          |              |                                |
|--------------------------|--------------|--------------------------------|
| <b>Clinton</b>           |              |                                |
| VACANT                   |              |                                |
| <b>Cedar</b>             |              |                                |
| Joe Goodlove             | 563-349-6622 | joeiowaLH30@fbcom.net          |
| <b>Linn</b>              |              |                                |
| Van & Bev Becker         |              | NY2SF@imonmail.com             |
| <b>Benton</b>            |              |                                |
| Mike Kelly               | 319-472-5183 | mtk@videoportraits.com         |
| <b>Tama</b>              |              |                                |
| Jeannie Sieck            | 641-484-4000 | mary.jean15@hotmail.com        |
| <b>Marshall</b>          |              |                                |
| Harlan Quick             | 641-483-2440 | hmquick@partnercom.net         |
| <b>Story</b>             |              |                                |
| Scott Berka              | 641-377-2238 | colocity@netins.net            |
| <b>Boone</b>             |              |                                |
| John Fitzsimmons         | 515-432-3697 | seanfitz50@gmail.com           |
| <b>Greene</b>            |              |                                |
| Joyce Ausberger (Acting) | 515-386-4521 | bobjoyce@netins.net            |
| Bob Owens (Acting)       | 515-386-3419 | jaowens4230@yahoo.com          |
| <b>Carroll</b>           |              |                                |
| VACANT                   |              |                                |
| <b>Crawford</b>          |              |                                |
| Deb Rothmeyer            | 712-263-8356 | debbierothmeyer55@outlook.com  |
| <b>Harrison</b>          |              |                                |
| Kathy Dirks              | 712-642-2114 | kdirks@harrisoncountyparks.org |
| Elaine Ehlert            | 712-647-2049 |                                |
| <b>Pottawattamie</b>     |              |                                |
| Nancy Needham            | 712-256-7787 | teachernn@yahoo.com            |

**Support Staff**

|                                 |              |                          |
|---------------------------------|--------------|--------------------------|
| <b>Membership Coordinator</b>   |              |                          |
| Dean Parr                       | 319-366-0552 | drparr@mchsi.com         |
| <b>Newsletter Editor</b>        |              |                          |
| Prairie Rivers of Iowa          | 515-232-0048 | lincolnhighway@prrcd.org |
| <b>Noble Sojourner</b>          |              |                          |
| Lyell Henry                     |              | disorg@mchsi.com         |
| <b>Iowa Artist in Residence</b> |              |                          |
| John Fitzsimmons                | 515-432-3697 | seanfitz50@gmail.com     |
| <b>Webmistress</b>              |              |                          |
| Sandii Huemann-Kelly            |              | nilandcafe@gmail.com     |
| <b>Director Emeritus</b>        |              |                          |
| Bob & Joyce Ausberger           | 515-370-3738 | bobjoyce@netins.net      |
| <b>Byway Coordinator</b>        |              |                          |
| Janice Gammon                   | 515-232-0048 | jgammon@prrcd.org        |

# **National Lincoln Highway Conference & Henry Joy Tour**

By Bob Ausberger

For the first time, the conference will not be in a location on the Lincoln Highway as the conference is in Ann Arbor, MI and the tours will be in Detroit, MI. The conference headquarters is at the Ann Arbor Holiday Inn-3600 Plymouth Rd. 41805, exit 41 of U. S. 23, 734-769-9800 The University of Michigan at Ann Arbor is the location of the Lincoln Highway Archives. Detroit was the location of the original Lincoln Highway headquarters.

Monday is registration day. If you want to go on the pre-conference tour, meet Monday between 9am and 10am in Bristol, Indiana. The location will be announced on the website. We will follow the official route to Ann Arbor and register at the Holiday Inn at that time.



Tuesday, we travel to Detroit and options are to visit Greenfield Village, Henry Ford Museum, and the Rouge Assembly plant (where the new F150 pickup is made). Fees are \$13 and \$14 for these tours.

Wednesday, a Detroit Tour will take us to see some of the architectural gems that remain in the somewhat ravaged and distressed city. We will see some of the Packard Plant.

On Thursday, presentations and seminars will fill the morning and in the afternoon we will visit the archives in the Bentley Library. Henry B. Joy, Roy Chappin and Jens Jensen papers are all housed there.

Friday, the LHA annual meeting will be held in the morning. You can join the Henry Joy Auto Tour if you like, which includes a tour and dinner at the Packard Proving grounds. The LHA website has more information about the tour. It starts Saturday in Utica, MI and ends in San Francisco on July 8th. Overnight in Iowa is in Ames on Monday, June 29th.

Conference committee contact to sign up is JoyceChambers47@aol.com, 574 210 0262 and Conference website is: <http://indianalincolnhighway.org/lha2015>.

**Iowa Lincoln Highway Association Map Packs are available! Updated in 2013 with route corrections, the Lincoln Highway Heritage Byway route, and more. Map Packs are available for \$10 each from:**

**bobjoyce@netins.net  
Lincoln Highway Museum  
P.O. Box 224 Grand Junction, IA 50127**

## Mystery Place

By Van Becker

The Mystery Photo this month will be extra easy to identify as I have included "Then" and "Now" photos of this well-traveled section of the Lincoln Highway. As always, the question is: "Where is it?" To help, carefully consider these three clues.

1. Both photographers were facing west. The photographer for the recent photo was also hungry.
2. The black Jeep in the recent photo was not available for the earlier photo.
3. The location is a short walk to the cemetery.

If you think you can identify the Mystery Place, send an email to [lincolnhighway@prrcd.org](mailto:lincolnhighway@prrcd.org) or call 515-232-0048. Contact us with the correct information and we will take your name and contact information. We then will hold a random drawing on March 31 for a winner to receive a 2013 Iowa Lincoln Highway Map Pack! This is to accommodate for the varying time and travel the postal system can take and to give all a fair try.



## Last Issue's Mystery Place

The abandoned gas station location is on the south side of the LH/hwy 30 just one mile east of the Lincoln Highway Lions Club Tree Park in Grand Junction, IA.

**NOTE:** We will do the Mystery Place differently starting with this issue. Since the postal system doesn't deliver to all of Iowa on the same day, contact us with your answer and if correct, we will enter your information into a random drawing.



### The James H. Andrew Railroad Museum and History Center

at the Boone and Scenic Valley Railroad

**November 1 through May 22**

Monday - Friday 10 am - 4 pm

Saturday Noon - 4 pm

Closed Sunday

**May 23 through October 31**

Sunday - Thursday 10 am - 4 pm

Friday and Saturday 10 am - 5 pm



[www.iowarailwaymuseum.org](http://www.iowarailwaymuseum.org)

Visit one of Iowa's most interesting railroad collections

Museum Admission included with most train ride tickets!

## YOUR AD HERE

Business Card Size Ad: Single ad placed on an inside page of newsletter in black and white. The card or ad should be in standard digital format (.jpg) or scanner ready. Double size business cards will be double the price.

RATES: 1 Issue-\$10 2 Issues-\$20

3 Issues-\$30 Buy 3 Get 4th FREE

Contact Joyce for more information:

[bobjoyce@netins.net](mailto:bobjoyce@netins.net)

Are there upcoming events happening in YOUR community? Spread the word with an article in the newsletter, by posting on [www.iowabyways.org](http://www.iowabyways.org), or by adding an event to the ILHA website.

Contact the editor for more information at [lincolnhighway@prrcd.org](mailto:lincolnhighway@prrcd.org)

**ALL ABILITY CYCLES**

101 N Chestnut St.  
Jefferson, IA 50129

**Everyone Can Ride**

John Brunow  
515-386-8900 or  
[john@allabilitycycles.com](mailto:john@allabilitycycles.com)



## Tama-Toledo Lincoln Highway Bridge Park

By Jeannie Sieck, Tama County Consul

We are hosting a Meet and Greet/Volunteer appreciation day event on Saturday March 28th from 1:30-3:30 pm at the Fellowship Hall in Christ United Methodist Church (301 N Broadway) in Toledo. Coffee and cookies will be served. The public is invited. All LHA members are encouraged to attend as well.

At this event, we will share our goals and plans for the coming year with the community as well as introduce our officers and thank the many volunteers who have helped us. We are hoping for a large crowd!

We did apply for a National Lincoln Highway Association grant and will know at the National Conference in June if we receive funding.

The Park will host two large events this summer. On Friday May 15th, the Opening Ceremony for the Annual Lincoln Highway Bridge Festival will feature special acts with children and Abraham Lincoln. Afterwards, Mr. Lincoln will be downtown enjoying the ice cream social, wine tasting, and all the other fun activities. Abe and the children will be on a float in Saturday's parade. Please join us. It will be Fun! Fun! Fun!

On Friday August 14th and Saturday August 15th, we will hold our annual fundraiser, Lincoln Highway Buy-Way Yard



Tama Lincoln Highway Bridge Park Memorial

Sales, in the Lincoln Park and along the Lincoln Highway. We are hoping for sale locations from Chelsea, through Tama, and to the Meskwaki Powwow grounds! People can donate items or join us along the Lincoln Highway even if they don't already live along the route. We have asked antique vendors, collectors, and craftsmen to join us. There will be music and food in the park and of course, our famous "Lincoln Dog."

Prior to all of this fun, we have much work to do and need lots of volunteers to help with Clean-up Days in late March and April along the Mud Creek and at the Memorial and Flagpole/Rock area. We need supplies and manpower to remove debris, trim trees and bushes, remove vines and weeds. We need rich dirt and more mulch for the gardens and new perennials. Volunteers are needed throughout the summer to help plant, water and weed the Friendship Garden. We would like to add electric service and water to the park. We are currently carrying water from the Mud Creek in buckets! We have plans to extend

our Friendship Garden and hope to add an informational kiosk for visitors learn more about the Lincoln Highway and the Bridge as well as Tama and Toledo. This will help us promote, educate, and contribute to the economy of our town.

The organization has put the word out for volunteers and donations through many avenues of marketing and promotion. We are looking to businesses and associations for support, sponsorship, and contributions. We are also working with two city councils and other elected officials. Sweet Repeats, a local business, has an ongoing fundraiser offering Lincoln Highway Bridge key chains, cups, or T-shirts depending on the level of the donation.

As you can see, we have a lot planned for the year. Together, we can do anything!

**L**



The Lincoln Highway Bridge and Friendship Garden in Tama.

## Corridor Management Planning Update

By John Mazzello, CMP Project Coordinator

This winter, the Lincoln Highway Heritage Byway's Corridor Management Planning process moved into a new, public, phase. In February, we held the first in a series of public meetings to introduce the Lincoln Highway, and the concept of a Corridor Management Plan, to residents around the state.

You may recall from previous issues of this newsletter that a Corridor Management Plan (CMP) is a written document setting out a long-term plan for a byway and its important resources. The Lincoln Highway Heritage Byway's original CMP was created before the Lincoln Highway was designated as an Iowa Byway, so it no longer reflects the priorities of the ILHA or of Lincoln Highway communities and residents. The new revision of the CMP will reflect the Lincoln Highway Heritage Byway as an active and thriving part of Iowa's past and present heritage...

*Continued on page 5*

## Featured Events Along the Lincoln

### Sweldest Little Spring Tea on the Lincoln Highway

Sunday, April 12

2 p.m.

First Lutheran Church Family Center  
Belle Plaine, Iowa

What better way to celebrate spring than with old and new friends at a fabulous afternoon tea? You can savor brewed tea, tea sandwiches, cakes, cookies, and other delicacies, while you enjoy live music and a portrayal of Alice Roosevelt. Come early (doors open at 1:30) for a photo and art exhibit, punch, and conversation. Tickets are \$15, and include door prize chances. Group discounts available.

For more information, visit [belleplaineeventsplanner.weebly.com](http://belleplaineeventsplanner.weebly.com). Reservations are required; call 319-434-2079 or e-mail [belleplaineeventsplanner@gmail.com](mailto:belleplaineeventsplanner@gmail.com). Proceeds go to restore Belle Plaine's historic Herring Hotel and benefit scholarships for lifelong learners.



The first two Lincoln Highway Heritage Byway Corridor Management Plan public meetings were held in February in State Center (bottom) and Jefferson (top). Several additional meetings will be held all across the state this spring.

### CMP Update continued from page 4

Public meetings were held on February 12 in State Center, for the State Center and Colo communities, and February 17 in Jefferson, for the Greene County area. Local residents, ILHA members, elected officials, business owners, and others came out to share their ideas on the Lincoln Highway's important assets and their dreams for what the Lincoln Highway could be in the future. Each meeting featured great discussions and we are very appreciative for the time and energy of all attendees. We will be taking all these ideas and developing priorities for the whole byway and for future activities in each community.

Introductory Public meetings will be scheduled in other Lincoln Highway communities across the state this spring. At least one will be held in each of the 13 Lincoln Highway counties. We hope you will join us at the meeting in your community this spring. As always, to stay informed about the latest CMP activities in your community, sign up for our email list (visit [www.prrcd.org/cmp](http://www.prrcd.org/cmp) and click the blue "sign up" button), email me at [lincolncmp@prcd.org](mailto:lincolncmp@prcd.org), or call me at 515-216-4005. Looking forward to seeing you later this spring!

L



CMP Project Coordinator John Mazzello leading the latest CMP Meeting.

### Classic Car Roll Ins at Reed-Niland Corner

Location: Colo, Iowa

Date: 2nd and 4th Sundays (June, July, August and Sept.)

Time: 2-4pm

Facebook: Reed-Niland Corner or Niland's Cafe

Website: [www.reednilandcorner.org](http://www.reednilandcorner.org)

### The Welcome Center Farmers Market

Thursday May 21 – Thursday October 15, 2015

3:30 – 6:30 pm

At the Harrison County Welcome Center.

On market Thursdays, the village/welcome center also remains open until 6:30 pm. For an update of activities and events throughout the farmers market season, people can like our Facebook page "Harrison County Iowa Welcome Center." If you have any questions, feel free to ask Kathy Dirks, Harrison County LHA Consul, as she serves as co-market manager.

These events and more along the Lincoln Highway are listed on page 7.

L



## ILHA January Meeting Recap

By Jan Gammon,  
Prairie Rivers of Iowa

The Lincoln Highway Association met on January 10, 2015 at the Community Hall in State Center. With some funding from LHA, an intern from ISU, Paul Ehrsam, has been hired at Prairie Rivers of Iowa to help with the LHA website and other projects. He was introduced to the group as well as Jan Gammon, the new Iowa Lincoln Highway Heritage Byway Coordinator, who is also housed at Prairie Rivers of Iowa. She was elected as the secretary for the ILHA.

The ILHA will support the Tama-Toledo Bridge Park project and help with the application for the National Lincoln Highway Association grant for bridge repairs and improvements to the park.

In June, the 2015 National Conference will be held in Ann Arbor, MI. Joyce Ausberger encouraged everyone to attend and will look into transportation by bus. The 2016 Conference is tentatively set for New Jersey and the 2017 in Denison, Iowa. The conference center at the Boulders is reserved and more information will follow in the coming months.

The Auto tour will be Aug 21, 22, 23 and is \$30 for an Iowa or National member or \$40 for a non-member (will include a 1-year membership).

The City of Marion is interested in working with ILHA on their railroad bridge/bike path project. Jeff Benson and John Mazzello will talk to them about adding Lincoln Highway information into their plans.

Transportation Day will be January 27th at the State Capitol and the 10 cent gas tax will be the main topic discussed. It is a good time for groups to talk to legislators on transportation issues. Everyone is encouraged to attend. The State Byways, including the Lincoln Highway Heritage Byway, will have a booth in the Capitol rotunda.

The Corridor Management Plan is coming along nicely for the Lincoln Highway Heritage Byway. Two public meetings are planned in February for State Center/Colo and Jefferson/Scranton/Grand Junction.

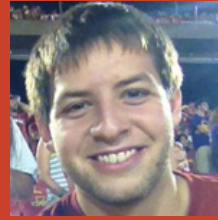
After the meeting, the group toured the renovated 1895 Benson Building to be used by NuCara Pharmacy and the 1932 Home Oil Gas Station that is now home to State Center's Police Department.

The next meeting will be April 11th at St. Francis (238 S 16th) in Council Bluffs. at 9:00 a.m. Lunch is at 12:30 at Dixie Quick's, 157 W Broadway. Check out the menu at <http://dixiequicks.com>

**L**

## Meet Your New LHHB Intern

By Paul Ehrsam



Hi there, my name is Paul Ehrsam and I am your new Lincoln Highway Heritage Byway Online Communications intern. Some of you might have met me at the meeting on January 10th, but for those of you who didn't, here is little about myself.

I am currently a senior at Iowa State University, pursuing a bachelor's degree in Advertising with a minor in design studies. Before moving to Ames for college, I grew up in Greenfield, Iowa

Through Prairie Rivers of Iowa, I will be helping out with the Lincoln Highway Association website, the Facebook page, newsletter, and anything else you might need me to do. I look forward to meeting those of you I haven't met yet, and continuing to work with you to get the word out about this great American highway.

**L**



Iowa Lincoln Highway Assn. Treasurer Joyce Ausberger, Jeannie Parr, President Deb Rothmeyer and Iowa LH State Director Dean Parr at the quarterly meeting State Center, IA.

...and was elected Secretary for your organization. I am more than happy to serve in this role! I also attended the Travel industry's Legislative Showcase and Transportation Day at the State Capitol. In February, John Mazzello and I presented at Corridor Management Plan public meetings. My next focus will be on a new energy conservation program, Greening the Lincoln, which will be piloted in Jefferson in the coming months. It certainly has been busy and I hope to visit with more of you and your communities in the near future.

**L**

**We invite you to share your photos and stories of the Lincoln Highway. Submit photos and stories to: Newsletter Editor, Prairie Rivers of Iowa**

**2402 S. Duff Ave  
Ames, IA 50010  
lincolnhighway@prrcd.org**

### **The Nebraska Chapter of the LHA lost two of its top leaders during December 2014 (via the Nebraska Lincoln Highway Association)**



**President - Robert "Bob" Stubblefield** of Shelton died on December 17, 2014. Bob served as National Director from Nebraska from 1999 to 2005. He was co-chairman of the LHA conference in Grand Island, NE in 2001, and recently he and his wife Lennie co-chaired the LHA Conference in Kearney in 2013, celebrating the Lincoln Highway Centennial. He was an avid collector of LH memorabilia and helped establish the LH Visitors Center at Shelton, where a lot of his collection is on display. Bob is survived by his wife, Lenore "Lennie, two sons, Scott and Mark, two daughters, Stephany and Susan, their spouses, 8 grandchildren, and 4 great-grandchildren.



**Vice President - William "Bill" Bauer** of Lincoln died in Lincoln on December 11, 2014. Bill was a very active LHA member, always participating in Chapter meetings. He had attended many of the National LHA conferences. Bill is survived by his wife Shirley and two sons, James of Lincoln and Jonathan of Slat Lake City, Utah, and one granddaughter, Sophie of Salt Lake City. He was also a member of the Walter P. Chrysler Club and collected model cars and car magazines.

### **Events on Along the Lincoln Highway**

| <b>Date</b>  | <b>City</b>      | <b>Event</b>   |
|--|------------------|--|
| March 28   | Toledo           | Meet and greet/Volunteer Appreciation day at the Fellowship hall at the Christ United Methodist Church from 1:30-3:30 pm.  |
| April 11   | Council Bluffs   | ILHA Meeting   |
| April 12   | Bell Plaine      | Sweldest Little Spring Tea on the Lincoln Highway: 2 pm First Lutheran Church Family Center visit <a href="http://belleplaineeventsplanner.weebly.com">belleplaineeventsplanner.weebly.com</a> for more info                                   |
| April 18 & 25  | Nevada           | The Nevada Community Historical Society is holding a murder mystery dinner at 5 p.m. at Evergreen Lane, 1204 H Ave, in Nevada  |
| May 21-Oct 15  | Missouri Valley  | The Welcome Center Farmers Market will be every Thursday from May 21- Oct 15 from 3:30-6:30 p.m. at the Harrison County Welcome Center, for updates in Farmer's Market activities like the "Harrison County Iowa Welcome Center" Facebook Page |
| May 22-Oct 9   | State Center     | 15th Season of State Center Farmers Market from 5-7 p.m. each Friday evening on south side of West Main Street   |
| May 23-Sept 6  | State Center     | Memorial Day to Labor Day weekend historic Watson's Grocery, located at 106 West Main Street, State Center, open for tours from 1-4 p.m. on Saturdays and Sundays or by appointment call (641-751-2014)  |
| June 5<br>June 26<br>July 17<br>August 7                   | State Center     | State Center Lion's Club Barbecued Pork Fundraisers from 5-7 p.m. State Center Farmer's Market, West Main Street   |
| June 19-June 21  | State Center     | 58th Annual State Center Rose Festival   |
| June 14 & 28<br>July 12 & 26<br>Aug 9 & 23<br>Sept 13 & 27 | Colo             | Classic Car Roll Ins at Reed-Niland Corner 2-4 p.m. Food and beverages available   |
| June 22-26   | Ann Arbor, Mich. | Lincoln Highway National Conference  |
| June 10-12   | Colo             | Colo Crossroads "Magic at the Crossroads" celebrating the crossroads of the Lincoln and Jefferson Highways   |
| July 11  | Clinton          | ILHA Meeting   |

## Farmer's Markets Along the Byway

The Lincoln Highway has many markets available to residents and visitors all summer long.  
Check the internet for times.

**Ames** - North Grand Mall : Wed and Sat  
Main Street : Thurs

**Belle Plaine** - West of Pizza Hut : Fri

**Carroll** - Depot : Wed and Sat

**Cedar Rapids** - Green Square Park : Sat  
New Bo : Sat and Sun  
Noelridge : Mon, Wed, Fri

**Clinton** - Four Square Park : Wed and Sat

**Council Bluffs** - W Broadway : Thurs  
River City : Sat

**Marshalltown** - Cartwright Pavilion : Wed and Sat  
Main Street : Thurs  
Linn Street : Fri and Sat

**Cedar Rapids** - Green Square Park : Sat

**Colo** - Niland Café : Thurs

**Denison** - South 7th and #30 : Thurs

**DeWitt** - Lincoln Park : Mon

**Jefferson** - Courthouse Square : Tues

**LeGrand** - City Park : Mon

**Marion** - City Park : Wed and Sat

**Mount Vernon** - Community Center : Thurs

**Nevada** - City Hall : Tuesday

**State Center** - West Main St : Fri

**Toledo** - East side of Courthouse : Fri

**Vail** - Vail City Park : Mon

**Missouri Valley** - Welcome Center : Thurs

In this issue....

National Conference & Henry Joy Tour, Tama Bridge Park News, Byway Update, & more!

FIRST CLASS

[www.iowalincolnhighway.org](http://www.iowalincolnhighway.org)



Iowa Lincoln Highway Association  
P.O. Box 224  
Grand Junction, Iowa 50107

Place  
Stamp  
Here