



# Along The Lincoln Highway

**THE NEWSLETTER OF THE IOWA LINCOLN HIGHWAY ASSOCIATION**

**Volume 17, Number 1**

**SPRING 2012**

## **LINCOLN HIGHWAY BYWAY UPDATE** By John Mazzello

The Lincoln Highway Heritage Byway is off to an exciting start in 2012! John Mazzello and Peter Hoehnle have been developing a strategic plan to guide our efforts. We have identified four major goals: to ensure a strong administrative capacity for the Byway; to elevate, reveal, and preserve its historic fabric; to ensure the public utilizes and values the Byway as an economic and cultural resource; and to ensure sustainable and diversified funding.

In January, we began a Lincoln Highway Heritage Byway Facebook page, and our number of fans is increasing weekly. Our Facebook page is located at [www.facebook.com/LincolnHighwayHeritageByway](http://www.facebook.com/LincolnHighwayHeritageByway). We have been fortunate to have photographers provide us with dozens of beautiful images (including the LHA's Mike Kelly), many of which we have started sharing on Facebook. To complement these images, and to encourage more people to get outside and enjoy the Lincoln Highway, we are sponsoring a photography contest running between now and September.

This month, we have been interviewing candidates for a summer intern. The internship will focus on marketing the Byway, mapping its resources, looking at methods for using new technologies (such as smartphone apps), and writing about the Byway.

During the rest of the year, we will

THE LINCOLN HIGHWAY ASSOCIATION SHALL IDENTIFY, PRESERVE, INTERPRET AND IMPROVE ACCESS TO THE LINCOLN HIGHWAY AND ITS ASSOCIATED SITES, PURSUE THE APPROPRIATE MEASURES TO PREVENT FURTHER DETERIORATION, DESTRUCTION OR ALTERATION OF THE REMAINING SECTIONS, PUBLICIZE AND SEEK PUBLIC AWARENESS OF ITS GOALS AND ACTIVITIES FOR PRESERVING AND DEVELOPING THE LH, FACILITATE RESEARCH ABOUT THE LH, AND PUBLISH A MAGAZINE FOR ARTICLES AND NEWS OF ACTIVITY RELEVANT TO THE LH, WORK WITH LOCAL COMMUNITIES AND BUSINESSES TO PROMOTE THE LH AS A TOURISM DESTINATION, AND BE EXCLUSIVELY CHARITABLE AND EDUCATIONAL WITHIN THE MEANING OF THE INTERNAL REVENUE CODE.

continue to pursue grants and other funding sources in support of the Lincoln Highway and critical preservation and interpretation efforts. We will also continue to pursue grants and other funding sources in support of the Lincoln Highway and critical preservation and interpretation efforts. We will also continue our work toward our goal of ensuring that all of Iowa's byways are financially sustainable into the future.

In these, and in all the efforts of the Byway, your input is vital. Please continue to be in touch with us about your priorities, interests, and goals for the byway. We thank you for your dedication and truly appreciate the opportunity to work with all of you toward our shared goals of preserving and promoting the Lincoln Highway.

For more information about the Byway or the photography contest, please visit us at [www.prrcd.org/lincolnhighwayheritagebyway](http://www.prrcd.org/lincolnhighwayheritagebyway) or on Facebook.



Lincoln Highway Bridge in Tama  
(Photo by Mike Kelly)



[www.lincolnhighwayassoc.org/iowa](http://www.lincolnhighwayassoc.org/iowa)

**Iowa Lincoln Highway Association**  
**P.O. Box 14**  
**Ogden, Iowa 50212**



### ILHA Officers, Board of Directors, County Consuls, and Staff

	Officers	
	Phone	E-Mail Address
<b>President</b> Allan Richards	(641) 484-4000	AllanMaxRichards@aol.com
<b>Co-Vice Presidents</b> Dean & Jeannie Parr	(319) 366-0552	drparr@mchsi.com
<b>Secretary</b> Jeff Benson	(515) 233-1445	melbert@mchsi.com
<b>Treasurer</b> Joyce Ausberger	(515) 386-4521	bobjoyce@netins.net
<b>State Director</b> Jeff LaFollette	(563) 349-3047	jefflaf@q.com

#### Board of Directors (County Consuls)

<b>Clinton County</b> Jeff LaFollette	(563) 349-3047	jefflaf@q.com
<b>Cedar County</b> Joe Goodlove	(316) 650-0342	joeiowal30@fbcom.net
<b>Linn County</b> Van & Bev Becker		lowaLHA@lmonmail.com
<b>Benton County</b> Mike Kelly	(319) 472-5183	mtk@videoportraits.com
<b>Tama County</b> Allan Richards	(641) 484-4000	AllanMaxRichards@aol.com
<b>Marshall County</b> Harlan Quick	(641) 483-2440	hmquick@partnercom.net
<b>Story County</b> Margaret Elbert	(515) 233-1445	melbert@mchsi.com
<b>Boone County</b> John Fitzsimmons	(515) 432-3697	seanfitz50@hotmail.com
Ed Mondt	(515) 432-2343	tobes1994@yahoo.com
<b>Greene County</b> Bob Owens	(515) 386-3419	jaowens4230@yahoo.com
Joyce Ausberger	(515) 386-4521	bobjoyce@netins.net
<b>Carroll County</b> VACANT		
<b>Crawford County</b> Deb Rothmeyer	(712) 263-8356	debrothmeyer@gmail.com
<b>Harrison County</b> Marshall & Rita Schichilone	(712) 647-2646	
<b>Pottawattamie County</b> Charles Willard	(712) 322-5412	moose6969@cox.net

#### Support Staff

<b>Membership Coordinator</b> Dean Parr	drparr@mchsi.com
<b>Newsletter Editor</b> Jeff LaFollette	jefflaf@q.com
<b>Noble Sojourner</b> Lyell Henry	disorg@mchsi.com
<b>Iowa Artist in Residence</b> John Fitzsimmons	seanfitz50@hotmail.com
<b>Webmistress</b> Sandii Huemann-Kelly	shk@videoportraits.com
<b>Director Emeritus</b> Bob & Joyce Ausberger	bobjoyce@netins.net

### GRAND JUNCTION LINCOLN HIGHWAY CENTER UPDATE By Joyce Ausberger

Last month we announced the 1900 Watts Bank building in Grand Junction was purchased. The purpose of the bank is to be a Greene County Lincoln Highway Center. It will be a multi - purpose building as the Grand Junction community betterment group will also be located there. The back room will be occupied by Donna Delp for her beauty shop's new location. (Stop in for a hair cut!) We will be open April 1 for visitors. Please stop in so we can show off our new location. We will not have a telephone hook -up, but Bob's cell phone is 515 370-3738. Joyce's is 515-370-4022. The Greene County interpretive site (Lions Club Tree Park) is also in the progress of completing the interpretive signage.

L

**THERE IS STILL TIME TO REGISTER FOR THE 20TH ANNUAL LINCOLN HIGHWAY CONFERENCE IN CANTON OHIO. GO TO THE NATIONAL ASSOCIATION WEBSITE AT [www.lincolnhighwayassoc.org](http://www.lincolnhighwayassoc.org) FOR REGISTRATION FORMS AND MORE INFORMATION ABOUT THE CONFERENCE. THE OHIO LHA INVITES EVERYONE TO ATTEND.**

**2011 IOWA LHA MOTOR TOUR DASH PLAQUES AND WINDOW DECALS ARE AVAILABLE FOR SALE DECALS AND PLAQUES ARE \$3.00 EACH OR GET BOTH FOR \$5.00! THERE ARE SETS FROM 2008, 2009, AND 2010 ALSO. CONTACT JEFF LAFOLLETTE TO PLACE YOUR ORDER**

## 2011 IOWA LHA MOTOR TOUR PHOTO INFORMATION UPDATE

## Youngville Loses Longtime Supporters



The past year, several long time LHA members and founding members of the Youngville Highway History Association passed away.

Richard "Groovey" Grovert passed away May 6, 2011. Richard was Youngville's President and Farmer's Market director for many years. Richard also assisted with lunch hour at Youngville as well as events through the years.

On Nov. 18, 2011, Youngville lost Claude R. Conklin. Claude worked to help keep Youngville painted and in good repair. His

Mike Kelly apologizes for the delay in posting the 2011 Motor Tour group photo and assures us that the 2012 Photo will be on display and available at Niland's Café in time for the 2012 tour's official closing ceremonies in Colo, IA on Sunday August 26.

Additional 2011 tour photos are now on the ILHA Motor Tour Facebook page. 2011 Color 8.5 x 11 prints are \$10.00 + \$3.00 S&H

Contact: **Mike Kelly (319) 472-5183**  
PO Box 108  
Vinton, IA 52349

2011 Motor Tour photo copies are also available at Niland's Café. (The money you save by not having to pay shipping will buy you a piece of pie a la mode!)

positive demeanor was always appreciated. If you ever attended an event at Youngville, chances are it was Claude that directed you to your parking place.

Donald Wheeler passed away Feb. 6, 2012. Don's family built Youngville Cafe in 1931. The Wheelers lived just east of Youngville and in 1995 Don donated the property to Benton County. The restoration of Youngville Cafe was Benton County's primary Sesquicentennial project. **L**

**WHAT'S MISSING IN THIS SPACE?  
YOUR BUSINESS AD. WANT TO ATTRACT  
LINCOLN HIGHWAY MEMBERS TO YOUR  
BUSINESS? SEE THE INFORMATION BELOW  
AND WE'LL FILL THIS SPOT WITH YOUR AD!**

### NEWSLETTER ADVERTISING RATES

Business card size ad: Single ad placed on an inside page of the newsletter in black and white. The card/ad should be in standard digital format (.jpg) or scanner ready. Double size business cards will double the price.

**Rates: 1 issue- \$10 2 issues- \$20  
3 or 4 issues- \$30**

**(Buy three and get 4th free)**

**Flyer: 1 page 8-1/2 X 11 provided by the customer inserted into our eight page newsletter.**

**Rates: 1 page flyer- 1 issue- \$50**

Please visit our website for more information and to download an advertising rate sheet. Information about advertising on our website is also available. Check us out at:

**[www.lincolnhighwayassoc.org/iowa](http://www.lincolnhighwayassoc.org/iowa)**



**641-377-3663 (FOOD)**  
[nilandcafe@gmail.com](mailto:nilandcafe@gmail.com)

**NILAND CAFE & COLO MOTEL**

Hours: Tuesday-Saturday  
6:30 a.m. - 8:00 p.m.  
Sunday 6:30 a.m. - 2 p.m.  
Breakfast Buffet  
Closed Mondays

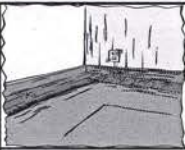


FIND US ON FACEBOOK! 

SEE US ON COLO CITY PAGE WEBSITE  
UNDER REED/NILAND CORNER

### Upcoming LHA State Meetings

April 14, '12	Carroll
July 14, '12	Colo
October 13, '12	Cedar County



## The President's Corner

By Allan Richards,  
Iowa LHA President

Wonderful! It is a beautiful, bright, sunny and warm day, perfect for traveling the Lincoln Highway. Every day for a tour of the Lincoln Highway is a great day, make that effort to travel and explore as you will find new, exciting and interesting sites each and every trip.

I have greater respect for the Lincoln Highway Association members that have worked over the past twenty years to add to the history of the Lincoln Highway. In my second year as Iowa's President, I see the difficulties encountered in the past to overcome the obstacles to the preservation of the highway.

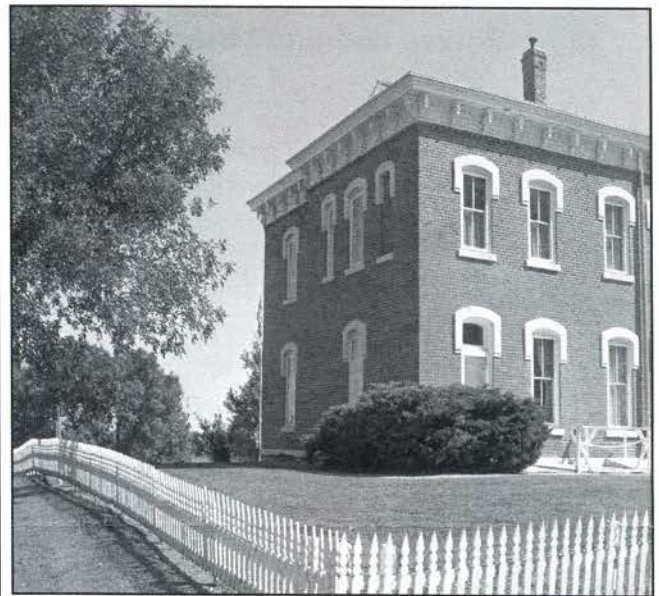
The historical preservation acts, laws and organizations have many challenges to reach the goals of allowing historical properties to be preserved for future generations. Although, the law is designed to promote saving historical properties, many of the same federal and state agencies and personnel are oblivious to the realities on the ground. In the words of the regional and state directors of FEMA enlisted with the authority and responsibility to protect historic properties, including the history of the Lincoln Highway, they ask for input, but they "dictate" the outcome. This more often than not is for the most common result of tear it down and let the wheels of progress move on. I must report that the resistance and reluctance to help in the promotion, preservation and education about the Lincoln Highway needs many more years of effort. The association has done more than its share of the work in time and money, but it is unfortunate that those in government being paid to preserve history are moving in the opposite direction.

Advocacy is a difficult art form, and the true and effective leader should stand tall in seeking more than possible to achieve the desired results. Sometimes the communities themselves do not see the good in possible outcomes. This may be in the form of protection a property, placing a sign to educate the student or public, to show a route, or highlight the community. The many efforts of the Iowa Lincoln Highway Association in the form of the Annual Buy-Way Sale, the Motor Tour, placement of a kiosk, or the development of a historical property are all significant projects that will reach the results for honoring the Abraham Lincoln Memorial Highway, American's first Main Street across America. Everyone should continue in these efforts as you are best qualified to act. We must continue in the work as presented in our charter and bylaws. I know that you have that energy and dedication, thank you from the bottom of my heart. Look past the failure and focus on the successes that you have achieved and continue in the little steps that you are able to accomplish for the association. Thank you all for your tireless efforts, endless tasks, and sacrifices you have made in this grand effort as we move towards a

a century of the Lincoln Highway. Enjoy, and continue traveling the Lincoln Highway. See you at the meeting in April, and down the road.

*Allan*

## NAME THAT LINCOLN HIGHWAY SPOT



We took the last issue off so we could find some interesting places for you to discover. So we are back for another round. And now we are asking you if you can name this Lincoln Highway spot. Those of you who came on the motor tour last year may remember it well. But if not, with the warm weather approaching now is the time to hit the road to find out where this spot is located.

You all know the drill. If you think you know the spot, please send an e-mail to the newsletter editor at [jefflaf@q.com](mailto:jefflaf@q.com). If you have the correct answer, we will print your name in the next issue of this newsletter to let everyone know that you are a super highway sleuth. We will let you know where this spot is in our next issue. And remember, we are always looking for your submissions for "Name That Lincoln Highway Spot". So send in your photos.

**L**

## See YOU on the Lincoln Highway! This issue's new members.

Kent Sanderson

Manchester, MO

L (Denotes a Lincoln Highway County)



# 1<sup>ST</sup> Annual JHA Conference

Gateway Hotel & Conference Center  
Ames, Iowa  
April 27<sup>th</sup>-28<sup>th</sup> 2012



Please complete the form and mail it with your check or money order to:

Jefferson Highway Association  
Office of the Treasurer  
P.O. Box 294  
Colo, IA 50056

Name(s) \_\_\_\_\_  
*Please print your name(s) as you wish it/them to appear on your conference name badge(s)*

Address \_\_\_\_\_ City \_\_\_\_\_ State \_\_\_\_\_ Zip \_\_\_\_\_

Phone (\_\_\_\_) \_\_\_\_\_ Email \_\_\_\_\_

Conference Fees: (You must be a member of the Jefferson Highway Association to attend)	Fee Per Person	Number Of peo- ple Or qty	Total Amou nt
<b>Full Conference:</b> Includes all scheduled conference activities. Friday continental breakfast, a.m. and p.m. snacks, business meeting, lunch, seminars. Saturday bus trip to the Minnesota state line, lunch at the Historic Park Inn and dinner at Niland's Café plus one official conference Polo Shirt (Please circle size(s) S M L XL XXL XXXL men's sizes)	\$185		
Full Conference as above after March 1st	\$205		
Annual JHA Membership Dues (for new members)	\$ 20		
Additional Official Conference Polo Shirt(s) Circle size(s) S M L XL XXL XXXL	\$ 28		
<b>Total submitted for Conference</b>			

**Cancellation Policy:** Cancellations received by the Association prior to March 15, 2012, will be accepted without question. A fee of \$25 will be deducted to cover processing. After March 15, 2012, there will be no refunds except those granted by the Executive Committee for cases of extreme hardship.

COME FOR A SCENIC ILLINOIS & IOWA DRIVE IN YEAR NUMBER 5!  
 JOIN US FOR THE 5<sup>TH</sup> ANNUAL  
 IOWA LINCOLN HIGHWAY ASSOCIATION MOTOR TOUR  
 AS WE CRUISE FROM ROCHELLE, ILLINOIS TO COLO, IOWA  
**AUGUST 24-26, 2012**

Pre-Tour Event Thursday August 23 in the Rochelle Area!

**FEATURING STOPS IN:**

NEW STOPS: ILLINOIS COMMUNITIES OF: Rochelle, Dixon, Franklin Grove, Sterling/Rock Falls,  
 Morrison, and Fulton

Group Dinner in Cedar Rapids on Saturday Evening, August 25

LOTS OF RAFFLE PRIZES!

Visit the Historic Lincoln Highway National HQ in Franklin Grove

See many of the beautiful and historic sites the LH in Illinois has to offer!

See Youngville Café-Listed on the National Register of Historic Places

Visit the Famous Lincoln Highway Bridge in Tama

And Enjoy Plenty of Illinois and Iowa Small Town Hospitality!

*Sponsored by the Iowa Lincoln Highway Association*

-----  
**REGISTRATION FORM**

**Any Vehicle - Any Model - Any Make**

**Registration Fee: \$20.00 per vehicle for Iowa, Illinois and National LHA members**

**\$30.00 per vehicle for non-members (Includes one year membership to the Iowa LHA)**

**You may join or leave the tour at any point or at anytime.**

**The Iowa & Illinois LHA is not responsible for accidents or injuries incurred on this motor tour**

NAME \_\_\_\_\_ Phone \_\_\_\_\_

ADDRESS \_\_\_\_\_

CITY \_\_\_\_\_ STATE \_\_\_\_\_ ZIP \_\_\_\_\_

E-MAIL \_\_\_\_\_

YEARS ON THE TOUR \_\_\_\_\_ T-SHIRT SIZES \_\_\_\_\_ HOW MANY? \_\_\_\_\_

Make checks or money orders payable to: Iowa Lincoln Highway Association

Mail To:  
 Iowa LHA Motor Tour  
 c/o Jeff LaFollette  
 2130 W. 4<sup>th</sup> St.  
 Davenport, IA 52802

More Tour Information:  
 Jeff LaFollette  
 jefflaf@q.com  
 563-349-3047

-----  
**A LIST OF MOTELS AND TOUR ITINERARY WILL BE MAILED TO YOU SOON  
 AFTER WE RECEIVE YOUR TOUR REGISTRATION.**

## SPRING OVER TO CARROLL FOR THE NEXT IOWA LHA MEETING

The Iowa Lincoln Highway Association's spring meeting takes us to western Iowa in Carroll County where we will be gathering. The meeting will be conducted **Saturday April 14, 2012** at the **Pizza Ranch**, located at 425 W. Highway 30, right on the heart of the Lincoln Highway in Carroll. Coffee and rolls will be available at 9:00 AM. President Allan Richards will bang the gavel around 9:30 to begin the meeting. After the meeting around noon, we will have lunch there at the Pizza Ranch buffet, (The buffet is great) or you can order off the menu. We are aiming to return to the spring and fall tour meeting format, where we have short business meetings, and get out to tour Lincoln Highway sites. This time after lunch, we will visit the Carroll County Museum. All members and anyone else interested in the Lincoln Highway is welcome to join us. We hope you will be able to come to our spring meeting and tour.

**DIRECTIONS: FROM THE EAST-** Travel west on US 30. (Lincoln Highway) Entering Carroll, follow US 30 into town and look for the Pizza Ranch which will be on your left.

**FROM THE WEST-** Travel east across US 30. (Lincoln Highway). As you enter Carroll follow US 30 into town and look for the Pizza Ranch which will be on your right. **L**

