



Along The Lincoln Highway

THE NEWSLETTER OF THE IOWA LINCOLN HIGHWAY ASSOCIATION

Volume 15, Number 4

WINTER 2010

WELCOME OUR NEW IOWA LHA OFFICERS FOR 2011-2012

The Iowa LHA conducted its quarterly meeting on Saturday October 9, 2010 in Clinton, IA and one of the items of business was to elect new officers for a two year term to serve in 2011 and 2012. Our new slate of officers is **Allan Richards**, President, **Dean & Jeannie Parr**, Co-Vice Presidents, **Jeff Benson**, Secretary and **Joyce Ausberger**, Treasurer. Starting with our president, Allan has served as our association vice president for the past two years, and is currently the Tama County Consul. Allan resides in Tama. Co-Vice Presidents Dean & Jeannie Parr are very active in the state and national LHA organizations. Dean & Jeannie live in Cedar Rapids. Jeff Benson has been elected to a third term as secretary. Jeff has been active in the Iowa LHA since the beginning and is currently working on the Greene County Interpretive Site and has been working diligently with the three Iowa RC&D's and the Iowa DOT getting the Lincoln Highway listed as a Heritage Byway and is now working on the final stages of getting the route signed, which should take place in 2011. Jeff and his wife Margaret live in Ames. Joyce Ausberger has been involved with the Iowa LHA since the beginning as well and has been treasurer since before the editor of this newsletter became a member of the Lincoln Highway Association. Joyce and her husband Bob, who was a president and

THE LINCOLN HIGHWAY ASSOCIATION SHALL IDENTIFY, PRESERVE, INTERPRET AND IMPROVE ACCESS TO THE LINCOLN HIGHWAY AND ITS ASSOCIATED SITES, PURSUE THE APPROPRIATE MEASURES TO PREVENT FURTHER DETERIORATION, DESTRUCTION OR ALTERATION OF THE REMAINING SECTIONS, PUBLICIZE AND SEEK PUBLIC AWARENESS OF ITS GOALS AND ACTIVITIES FOR PRESERVING AND DEVELOPING THE LH, FACILITATE RESEARCH ABOUT THE LH, AND PUBLISH A MAGAZINE FOR ARTICLES AND NEWS OF ACTIVITY RELEVANT TO THE LH, WORK WITH LOCAL COMMUNITIES AND BUSINESSES TO PROMOTE THE LH AS A TOURISM DESTINATION, AND BE EXCLUSIVELY CHARITABLE AND EDUCATIONAL WITHIN THE MEANING OF THE INTERNAL REVENUE CODE.

State Director of the Iowa LHA and has served in various other capacities within the Iowa and National LHA, live on their farm near Jefferson.

We wish to take this opportunity to thank outgoing president Kathy Dirks for her service and dedication to the Iowa LHA. Kathy attended national conferences, has worked with the RC&D's in the Heritage Byway project and has represented Harrison County and the Iowa LHA in various tourism conferences through her day job at the Iowa Welcome Center just east of Missouri Valley. Kathy stated at the close of the meeting that she was not going anywhere and would continue to be at meetings and functions. I wish to thank Kathy for her help out west in helping me set up stops for the motor tour. Since I live out in the east along the mighty Mississippi, I doubt I could have gotten the job done of putting those stops together as smoothly and efficiently without her help. Her support and enthusiasm was greatly appreciated and she always has a smile to share. If you are heading toward Missouri Valley, stop at the Welcome Center, say hi and thank her for a job well done.

Now its time to welcome and offer our support to our new leaders. If you have any ideas you wish to share, please feel free to contact our officers anytime through e-mail or by phone. Better yet, plan to attend our next quarterly meeting in Tama County on Saturday January 8. Also, feel free to contact our county consuls as well. There will be a lot of things happening on the LH in Iowa in 2011. **L**



www.lincolnhighwayassoc.org/iowa

**Iowa Lincoln Highway Association
P.O. Box 14
Ogden, Iowa 50212**



HAVE SPARE TIRE, WILL TRAVEL

BY VAN & BEV
BECKER

In late November 2010 a select group of Iowa LHA officers met with the Iowa RC&D people and a DOT representative in Ames. We met to look forward, seeking a way to accomplish our joint objectives. One of the major agenda items of the meeting was the listing and discussion of objectives, strategies and projects of the Iowa LHA. The group wanted to avoid duplicating efforts and re-inventing the wheel.

Plans & Projects: Have we ever listed them? If so, where can I find this list? I consulted Jeff LaFollette, our Iowa State Director, and together we compiled a list of what the Iowa LHA is now pursuing and projected plans for the future. As Jeff had work commitments, I attended the meeting in his place as a national director at large.

We realized that many, perhaps as many as 90% of the Iowa members are unaware of all our ongoing and projected plans. The list is not secret.

So, here in this column usually reserved for history with a hint of humor, I will share our list of projects and objectives as they were presented at the Ames meeting to keep the Lincoln Highway alive.

IOWA LHA OBJECTIVES AND STRATEGIES

- 1) Finish the Grand Junction Lions Tree Park and Lincoln Highway interpretive site. Many years in process and so close to being finished. This project is funded.
- 2) Support Jeff LaFollette's River-to-River Motor Tour. This functions as a money maker and recruiting tool. Besides, it's fun too!
- 3) Support Van Becker's Amateur Radio Special Event Station, NY2SF. This functions as a recruiting tool and helps with public awareness.
- 4) Support Deb Rothmeyer's state-by-state LHA Buy-Way Yard Sale project. The first year in Iowa was a successful first step. This project needs the route prominently marked.
- 5) Push toward updated digital information sharing.
- 6) Continued updates to our Iowa LHA website including recruiting a replacement webmistress.
- 7) Support Brian Butko's (up and running...and quite popular) LH blog. www.lincolnhighwaynews.com
- 8) Encourage more authors and contributors of articles and photos. Reports on our activities and events. We need fresh ideas! Every member has a story to tell about the Lincoln Highway in their area or respective county.

9) Digital MAPS: GPS, CD, website printable maps. Goal -- make them free or very low cost. Can we partner with a GPS manufacturer or, smart phone app writer??

10) Continued planning and support for the 2017 National LH Conference in Western Iowa. Ames Visitors and Convention Bureau has already expressed interest.

11) Support existing LH interpretive sites, i.e., Youngville, Colo, Harrison Co. Visitors' Center. (We no longer have the "Clubhouse" in Jefferson.)

12) Collect and warehouse materials for display at the Iowa Transportation Museum in Grinnell.

13) Ongoing discussions to add LH kiosks in Benton County at Youngville and in Cedar County.

14) Ongoing discussions to repaint faded poles from Youngville east, especially the "Christmas Poles."

15) Ongoing discussion to mark the site near Montour where LHA Field Secretary Henry Osterman fatally crashed his Packard.

16) Cooperate with Iowa State Tourism on matters along the LH corridor.

Of course, our core objectives remain to identify, recognize and protect historic sites, to preserve and protect remnants of the LH highway and vintage roadside culture and to support efforts to improve highway safety. **L**

2010 Iowa LHA Motor Tour Dash Plaques and Window Decals For Sale

We have dash plaques and window decals from the 2010 Iowa LHA motor tour left and we are offering them for \$3.00 each or a set of one decal and one dash plaque for \$5.00. If you are interested, in these, please contact Jeff LaFollette by e-mail at jefflaf@peoplepc.com. Or you can send a check or money order to Jeff at **2130 W. 4th St. Davenport, Iowa 52802**. Make your check payable to the Iowa Lincoln Highway Association. There are also available a limited number of 2008 and 2009 dash plaques and decals for the same pricing (\$3.00 apiece or \$5.00 for a set.) Get yours today before they are gone. We hope you can join us for the 2011 Motor Tour! **L**

ILHA Officers, Board of Directors, County Consuls, and Staff

Officers

President	Phone	E-Mail Address
Allan Richards	(641) 484-4000	AllanMaxRichards@aol.com
Co-Vice Presidents Dean & Jeannie Parr	(319) 366-0552	drparr@mchsi.com
Secretary Jeff Benson	(515) 233-1445	melbert@mchsi.com
Treasurer Joyce Ausberger	(515) 386-4521	bobjoyce@netins.net
State Director Jeff LaFollette	(563) 349-3047	jefflaf@peoplepc.com

Board of Directors (County Consuls)

Clinton County Jeff LaFollette	(563) 349-3047	jefflaf@peoplepc.com
Cedar County Joe Goodlove	(316) 650-0342	joeiowalh30@fbcom.net
Linn County Van & Bev Becker		lowaLHA@lmonmail.com
Benton County Mike Kelly	(319) 472-5183	mtk@videoportraits.com
Tama County Allan Richards	(641) 484-4000	AllanMaxRichards@aol.com
Marshall County Harlan Quick	(641) 483-2440	hmquick@partnercom.net
Story County Margaret Elbert	(515) 233-1445	melbert@mchsi.com
Boone County John Fitzsimmons	(515) 432-3697	seanfitz50@hotmail.com
Ed Mondt	(515) 432-2343	tobes1994@yahoo.com
Greene County Bob Owens	(515) 386-3419	jaowens4230@yahoo.com
Joyce Ausberger	(515) 386-4521	bobjoyce@netins.net
Carroll County VACANT		
Crawford County Deb Rothmeyer	(712) 263-8356	debbie44@frontiernet.net
Harrison County Marshall & Rita Schichilone	(712) 647-2646	
Pottawattamie County Charles Willard	(712) 322-5412	moose6969@cox.net

Support Staff

Membership Coordinator Dean Parr	drparr@mchsi.com
Newsletter Editor Jeff LaFollette	jefflaf@peoplepc.com
Noble Sojourner Lyell Henry	disorg@mchsi.com
Iowa Artist in Residence John Fitzsimmons	seanfitz50@hotmail.com
Webmistress Sandii Huemann-Kelly	shk@videoportraits.com

DEAN PARR IS NEW ILHA MEMBERSHIP COORDINATOR

Dean Parr has assumed the reigns as the new Iowa LHA Membership Coordinator, taking over from long time coordinator Cecil Stewart. Dean and his wife Jeannie are newly elected Co-Vice Presidents of the Iowa LHA. Dean lives in Cedar Rapids and if you have inquiries about your membership, you may e-mail him at drparr@mchsi.com.

Cecil has been the Iowa LHA membership coordinator probably since the beginning of the association and he has done a great service to the organization. Cecil is stepping down from the position because he spends several months of the year in Seattle with his kids and grandkids. He resides in Ames when he's not in Seattle. We thank Cecil for his years of dedicated service and wish him the best. We hope to see him at future Iowa LHA meetings. **L**

ALONG THE LINCOLN HIGHWAY GOING GREEN?

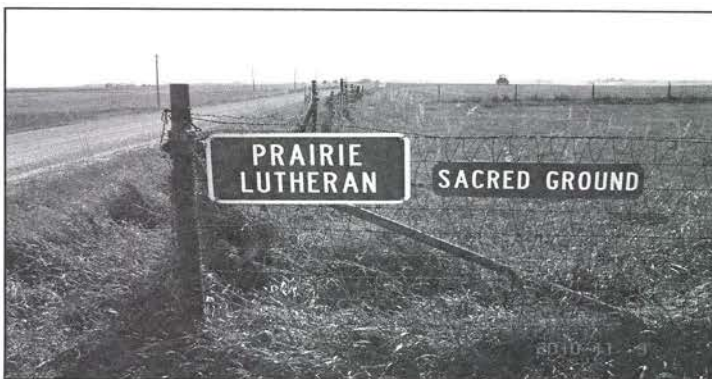
The Iowa LHA is discussing ideas to save postage fees and paper by going green. We are discussing the possibility of sending out an e-newsletter to those of you who would like to receive it by e-mail. We are asking for your feedback if you wish to receive your newsletter as you do now or if you would like an e-copy. If you wish to receive an e-copy, you would be e-mailed a link to download a PDF file when the issue is ready. We need to hear from **YOU!** Please e-mail editor Jeff LaFollette at jefflaf@peoplepc.com to express your opinion. **Do not worry, we are not going to eliminate mailing newsletters.** But if you wish to receive an e-newsletter instead, we'd be happy to send one via e-mail. I encourage every member to let me know your opinion. I will tally the results and let everyone know the results in the next issue. If you do not have e-mail, please call me at **563-349-3047** and let me know your thoughts. Thank you for your help! **L**

Name That Lincoln Highway Spot

The last photo of "Name that Lincoln Highway Spot" produced only one correct guess. Photo contributor Van Becker stumped everyone but two people. One was the editor of this newsletter. Although the editor knew where this photo was taken, he doesn't count in this contest. The lone correct guess came from Stan Mizerny of New Liberty, Iowa in Scott County. This spot is east of Mechanicsville where the new LH curves left, and there is a section of Lincoln Highway gravel which is



the original route that veers to the right and goes right into downtown Mechanicsville. This old Willy's truck has been sitting here for a number of years, I'm going to guess at least 20 if not more. Congratulations to Stan for his keen eye. Now, we have not one, but two photos for you to check out for the next issue. Van Becker has submitted these photos for your inspection. Your mission is to guess where this Lincoln Highway spot is in these photos below and to the right. Send your guesses to Jeff LaFollette by e-mail at jefflaf@peoplepc.com. If you are correct, we'll list your name in our next issue. **L**



Upcoming LHA State Meetings

January 8, '11	Tama County
April 9, '11	Colo
July 9, '11	Youngville-Benton County
October 8, '11	Greene County

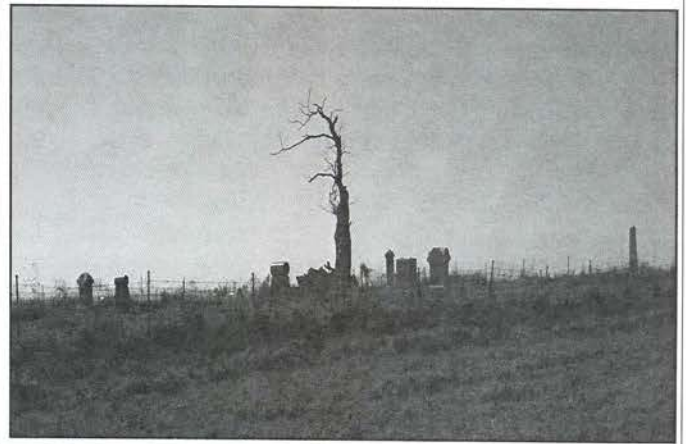
STATE DIRECTOR POSITION UP FOR ELECTION IN 2011

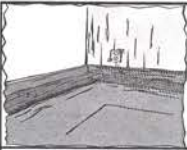
Iowa will be electing a state director to represent the state for the National Lincoln Highway Association in 2011. Current director Jeff LaFollette's term expires in June 2011. Jeff is eligible to run for another term which will go until 2014. We are always looking for candidates to serve the Lincoln Highway Association. If you are interested in this position, please contact either State Director Jeff LaFollette or Iowa LHA President Allan Richards at their e-mail addresses listed on page three.

Candidates need to submit brief statements on why they feel they would be qualified to serve, a brief biography and a willingness to serve. The Iowa LHA will submit its candidate or candidates at the January meeting in Tama and those candidates will be voted to the position by the general membership of the national LHA. If there is more than one candidate, the winner of the election will be announced at the national LH conference in Nevada in June of 2011.

The state director position represents Iowa at National LHA bi-monthly teleconferences, and at national conferences across the country. Also, the director gives national reports at the state quarterly meetings. The director files an annual report to the national LHA prior to every conference and other duties. The position does not take up a lot of one's time but it is important that a director does represent the state. The state director must also be a National Lincoln Highway Association member.

If you have any questions on the state director position, please contact current State Director Jeff LaFollette and he will be happy to answer your questions. As stated earlier, the Lincoln Highway Association is always looking for people who wish to offer their time and service to the association. We thank all of our members for their continued support of our organization. **L**





The President's Corner

By Allan Richards,
Iowa LHA President

Welcome to the new year of 2011 or 2K11 as some people may say. It will be another great year along the Lincoln Highway. My travels are extensive, but yours are greater I am sure and I look for your help in making this another successful year. Your efforts have made the LHA of Iowa a success.

Tama County is my lifelong home along the highway and I am thankful for the many great places on the Lincoln Highway, with the Lincoln Highway Bridge in Tama, a true landmark for Abraham Lincoln. Remember that four miles North on US 63 you will find land that was deeded to Lincoln after his service days. I hope that we all remember the vast historical, natural and cultural enjoyment we all may experience along the highway.

My "Along the Highway" in Tama County would read like this: Arriving from Benton County a slow 10 minute drive to Chelsea you would experience the vast land of the Iowa River Corridor to the South and all of its natural beauty. You may wish to take in a historical cemetery to the North or just waiting to arrive in Chelsea. A stop at the Silver Dollar, which you may call one of the "Glad Hands Club" members of days past, where you will find a dozen historical pictures of early life in the town and stories of the floods. Or you may want to explore the early century library and other sites of the old home town for many.

Onward to Tama past the Otter Creek Marsh and an original one room school house on the right just before the intersection with new 30. The next two mile stretch of road takes you to Gladstone over the old Rail Road right away with the few remaining buildings that may soon go to another new road. A short jaunt further and you may take in the John Ernest Winery, or go over the hill and you will be surprised that a mile of the road is gone and you enter the new expressway. Remember exit 204 takes you down to the King Tower Café, another "Glad Hands Club" candidate.

Forward to the bridge, through Tama, including stop at Sweet Reaps for coffee and antiquing, old pictures of Tama, the Glad Hands Club and maybe a short trip to Toledo, the Courthouse, Museum, Libraries, Schools or all the other local culture. Historical accounts will say that the original Army Convoy stopped in Traer with its Winding Stairway, and over to Gladbrook where there now is a Matchstick Museum.

The experience in Tama will be complete with the trip thru the Meskwaki Settlement, where the full history is shown on the walls and displays at the Casino Hotel. The original Lincoln Highway goes thru the settlement across the Iowa River on an old wooden bridge.

Up the hill to the west toward Montour brings you to the site of the Henry Ostermann fatal crash. Into Mont-

NEWSLETTER ADVERTISING RATES

Business card size ad: Single ad placed on an inside page of the newsletter in black and white. The card/ad should be in standard digital format (.jpg) or scanner ready. Double size business cards will double the price.

Rates: 1 issue- \$10 2 issues- \$20

3 or 4 issues- \$30

(Buy three and get 4th free)

Flyer: 1 page 8-1/2 X 11 provided by the customer inserted into our eight page newsletter.

Rates: 1 page flyer- 1 issue- \$50

Please visit our website for more information and to download an advertising rate sheet. Information about advertising on our website is also available. Check us out at:

www.lincolnhighwayassoc.org/iowa

FOR SALE

**Original Bronze Medallion from
Lincoln Highway
Concrete Marker
Marked Whitehead-Hong, New Jersey
\$500.00 Guaranteed Old
Lynn Christian 515-232-2222**

See YOU on the Lincoln Highway! This issue's new members.

Karen Davis

Fred Keston

James Glenn

John & Lynn Urban

Paton, Greene L

Fort Dodge, Webster

Ypsilanti, MI

Racine, WI

L (Denotes a Lincoln Highway County)

our with an early 1900's bank building and Rube's Steakhouse, another Glad Hands Club candidate and all the surrounding farms, lakes, and just plain old Iowa life as it is and has been and on into Marshall County. The trip may have been an hour, a day, a week, or in my case a lifetime.

Dream for the preservation of individual stories, properties, and experiences on our historic Lincoln Highway. Together we will achieve an impact for the results we all desire in our associate. Any effort, any input, and any contribution adds to the success.

Allan

**BOOK REVIEW:
IOWA'S AUTOMOBILES**
An Entertaining & Enlightening History
By Bill Jepsen
Review by Jeff LaFollette

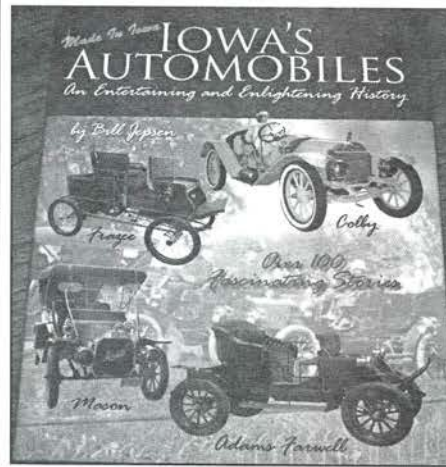
This is my first book review, and I couldn't have picked a better one to start with!

Growing up I had a love of cars and history. My dad was very meticulous on taking care of his cars and I guess I come by it naturally. I guess that is why I enjoy organizing the motor tour because I get to see so many unique styles of cars. I think that is why the book "*Iowa's Automobiles*" written by Boone, Iowa resident Bill Jepsen intrigued me so much.

Bill, who was born and raised in Davenport, Iowa has compiled a wonderful history of the early automobile industry in Iowa in the years of the early 20th century. Bill breaks down the history of the automobile in Iowa into six categories in his book. Dreams, Schemes & Misinformation, those that had an intention of being built but never got off the drawing board. Yes-No-Maybe, showing that there are entries for reference material but no evidence of an actual auto being produced. One-Off's & Limited, stating that there was one example produced, or a limited number for personal use. Prototypes, proving that there were one or two machines with the intent to attract potential investors, and Manufactured, meaning that there was a production facility set up to produce vehicles for sale. There is also a category called Just For Kids (Young & Old), for miniature automobiles that are propelled by an engine. Unfortunately pedal cars do not qualify, but this is a fun category nevertheless!

Each category lists Iowa's communities alphabetically and tells the story and history of autos that were dreamed, built, and actually manufactured in Iowa. Most of the automobiles in this book are from a time-frame of 1900-1920, with notable exceptions like the Morrison Electric from Des Moines built in 1890, with a total of 12 being produced, selling for \$3600 each, to a vehicle as recent as 1983-84 called the Litestar, which resembled the fuselage of a jet engine at first glance. This vehicle was touted to go 100 miles per hour and get 100 miles per gallon, and was to be produced in the Carroll/Scranton area. I said "to be produced", because the vehicle was eventually produced in Michigan. There's a lot more interesting information to this story, but not enough space here to tell it.

Bill's book has 15 pages of color photos of vehicles that were actually built in Iowa and are still in existence, plus photos of manufacturing facilities then and now, and other bits and pieces of the Iowa automobile industry. The book has many, many pic-



tures throughout, over 200 photos of old advertisements, illustrations, etc.

Some other examples of Iowa autos include the Meteor from Bettendorf, The Mason from Des Moines, which became known as the "Maytag" because of an

investment from Fred Maytag of Newton, he of the well known Maytag Company which makes appliances. Mr. Maytag moved production of the car to Waterloo. The Spaulding from Grinnell, and many, many more.

The last section has personality profiles people who deserve special notice in Iowa history. These individuals are William Galloway, Fred & August Dusenberg and Walter Chrysler. Yes, Walter Chrysler of Chrysler Motor Company. Mr. Chrysler had an Iowa connection, as a resident of Oelwein, with "experiences that would later propel him to become one of the true pioneers of automotive history".

I would highly recommend this book to anyone who has an interest in automobiles and automotive history. Bill's research is extremely thorough, and he painstakingly put this book together to be historically accurate. He visited many libraries, viewed microfilms, and worked very hard putting this book together to piece together the history of Iowa's automobile industry, whether it was a manufactured auto or just a dream in one's mind. One part of the book that I give a big thumbs up to is on the inside of the back jacket where Bill states that "historical accuracy and credence are paramount in the book" Bill's effort is excellent because this is truly a first class book!

The book was published in 2007 and received the Thomas McKean Memorial Cup Award in 2008 from the Antique Automobile Club Association. This book is self-published meaning that Bill absorbed the cost of writing, research and production.

The book retails for \$39.95, but is available to Lincoln Highway Association members for a special price of **\$32.99 postage paid**. Bill will autograph the book if you request. You can get a copy from Bill by sending a check or money order to **Bill Jepsen c/o Iowa's Automobiles, 822 L Ave. Boone, IA 50036**. You can also contact him by e-mail at **willin@galynx.com**.

If you are traveling the Lincoln Highway and happen to be in Boone, look up Bill's home his is the one with a gas station in the front yard. That's a perfect fit for a man who loves automobiles.

L

JOIN US "4" A GOOD TIME AT THE 4th ANNUAL
IOWA LINCOLN HIGHWAY ASSOCIATION
RIVER TO RIVER MOTOR TOUR
FROM POTTAWATTAMIE TO CLINTON COUNTIES
AUGUST 26-28, 2011

FEATURING STOPS IN:
COUNCIL BLUFFS, MISSOURI VALLEY, CARROLL, BOONE,
COLO, LEGRAND, TAMA, YOUNGVILLE, CEDAR RAPIDS,
MOUNT VERNON, WHEATLAND, DEWITT

Pre-Tour Event Thursday August 25 in Council Bluffs, IA
NEW STOPS: Communities of LeGrand & Wheatland
Group Dinner in Cedar Rapids on Saturday evening, August 27 LOTS OF RAFFLE PRIZES!!
See the Famous Lincoln Highway Bridge in Tama
See Youngville Café-Listed on the National Register of Historic Places
And Enjoy Plenty of Iowa Small Town Hospitality!

Sponsored by the Iowa Lincoln Highway Association

REGISTRATION FORM

Any Vehicle - Any Model - Any Make

Registration Fee: \$20.00 per vehicle for Iowa LHA members

\$30.00 per vehicle for non-members (Includes one year membership to the Iowa LHA)

You may join or leave the tour at any point or at anytime.

The Iowa LHA is not responsible for accidents or injuries incurred on this motor tour

NAME _____ Phone _____

ADDRESS _____

CITY _____ STATE _____ ZIP _____

E-MAIL _____

YEARS ON THE TOUR _____ T-SHIRT SIZES _____ HOW MANY? _____

Make checks or money orders payable to: Iowa Lincoln Highway Association

Mail To:
Iowa LHA Motor Tour
c/o Jeff LaFollette
2130 W. 4th St.
Davenport, IA 52802

More Tour Information:
Jeff LaFollette
jefflaf@peoplepc.com
563-349-3047

A LIST OF MOTELS AND TOUR ITINERARY WILL BE MAILED TO YOU SOON
AFTER WE RECEIVE YOUR TOUR REGISTRATION.

JANUARY 8 IS THE TIME, TAMA IS THE PLACE FOR THE FIRST IOWA LHA MEETING OF 2011

The Iowa Lincoln Highway Association's first meeting of 2011 takes us to the east central section of the state in Tama County where we will be meeting in Tama. The meeting will be conducted **Saturday January 8, 2011** at the **King Tower**. King Tower is located off the new US 30 bypass at exit 204 (another new alignment of the Lincoln Highway) on the east edge of Tama. Coffee and rolls will be available at 9:00 AM. New president Allan Richards will drop the gavel around 9:30 to begin the meeting. There will be several items for discussion, including the motor tour, the buy-way yard sale, and some of the objectives in Van Becker's "Spare Tire" article. We invite you to attend and see what will be happening on the Lincoln Highway in 2011. After the meeting around noon, we will have lunch at King Tower off the menu. Sandwich platters cost between \$6.00-\$7.00 per person, or order anything off the menu you wish. If you are planning to attend, please contact Jeff LaFollette by e-mail at jefflaf@peoplepc.com, or Allan Richards at AllanMaxRichards@aol.com We hope you can join us and let's hope for good weather!

DIRECTIONS: FROM THE EAST- Travel west on US 30. (Lincoln Highway) There is a new four lane bypass as you approach Tama. You will need to take exit 204 to get to King Tower

FROM THE WEST- Travel east across US 30. (Lincoln Highway) Follow 30 around Toledo & Tama until you come to the east edge of Tama. Take exit 204 to get to King Tower.

L

