



ALONG THE LINCOLN HIGHWAY



THE NEWSLETTER OF THE IOWA LINCOLN HIGHWAY ASSOCIATION

Volume 15, Number 2

SUMMER 2010

BRICK MURAL DEDICATED DURING CEREMONY AT BELLE PLAINE MUSEUM

On May 2nd a dedication to the **Legacy of the Belle Plaine Area** was held at the Belle Plaine Area Museum to commemorate the brick mural that



Brick Mural at Belle Plaine Museum
(Photo by Tammy LaFollette)

adorns the west wall of the building. The mural depicts the growth and development of the community and the Benton County area through agriculture, architecture, and transportation. The mural is sculpted brick artwork which begins by carving pictures or designs into stacked blocks of wet clay. The clay is fired and the mason reassembles the finished bricks into their original order. This form of artwork dates back over 3000 years to the walled cities of ancient Mesopotamia.

Belle Plaine Historical Society Board

THE LINCOLN HIGHWAY ASSOCIATION SHALL IDENTIFY, PRESERVE, INTERPRET AND IMPROVE ACCESS TO THE LINCOLN HIGHWAY AND ITS ASSOCIATED SITES, PURSUE THE APPROPRIATE MEASURES TO PREVENT FURTHER DETERIORATION, DESTRUCTION OR ALTERATION OF THE REMAINING SECTIONS, PUBLICIZE AND SEEK PUBLIC AWARENESS OF ITS GOALS AND ACTIVITIES FOR PRESERVING AND DEVELOPING THE LH, FACILITATE RESEARCH ABOUT THE LH, AND PUBLISH A MAGAZINE FOR ARTICLES AND NEWS OF ACTIVITY RELEVANT TO THE LH, WORK WITH LOCAL COMMUNITIES AND BUSINESSES TO PROMOTE THE LH AS A TOURISM DESTINATION, AND BE EXCLUSIVELY CHARITABLE AND EDUCATIONAL WITHIN THE MEANING OF THE INTERNAL REVENUE CODE.

President Beverly Winkie organized the dedication and invited several individuals to speak, including the artist who designed the mural, Gary Anderson from Cedar Rapids. Also on hand to speak at the dedication were Ernie Tippie, BPHS board member, James Daily Belle Plaine Mayor, Larry Schlue of the Mansfield Foundation, Eugene Severson, BPHS Volunteer, Candy Streed of the Silos and Smokestacks National Heritage Area, and Iowa LHA State Director Jeff LaFollette.



Iowa LHA State Director Jeff LaFollette speaks at dedication
(Photo by Tammy LaFollette)

There is a Lincoln Highway marker in the mural depicting the importance of the road to the community. If you are traveling in the Belle Plaine area, it is most definitely worth stopping to look at. If you can, please plan to attend the next meeting of the Iowa Lincoln Highway Association in Belle Plaine on Saturday July 10 at the museum. You are all invited to attend, and have the opportunity to see this fantastic piece of artwork for yourself. **L**



www.lincolnhighwayassoc.org/iowa

IOWA LINCOLN HIGHWAY ASSOCIATION
P.O. BOX 14
OGDEN, IOWA 50212



HAVE SPARE TIRE, WILL TRAVEL

BY VAN & BEV
BECKER

STANWOOD ONE-POST FILLING STATION

Lincoln Highway travelers in eastern Iowa should be familiar with this eyesore in Stanwood. The one-post canopy filling station still stands today with a faded Lincoln Highway logo painted on the post.



Back in the mid-40's, the station owner was Louie Luedeman and Merle Lehman, nephew of Louie, was hired to run it. Over a big Sunday dinner, Merle shared the following reminiscences of those days. Despite rumors to the contrary, the station has always been a one-post canopy station. In those early days, they pumped regular and ethyl Conoco gasoline on either side of the post. Working alone, Merle pumped gas, fixed tires, washed cars for \$1 and Simonized a sedan for \$10 to \$12. There was originally an outside drive-over oil pit for oil changes and grease jobs. In the winter those were cold jobs. The small station also served as a Greyhound bus depot. Only once while Merle operated it was the station robbed. The thieves made off in the night with a bag of quarters and a German P-38 pistol. Gas sold for only 27 cents a gallon back then so quarters were plentiful. The thieves missed the Greyhound cash receipts that were tucked away under the counter.

There was plenty of competition for the motorists' quarters in Stanwood. There were three other stations in the small town! One station was uptown in the business district and the other two were also along the Lincoln Highway.

The real estate market has changed quite a bit since Merle operated the station. Back in the late 40's, the whole business and station were offered for only \$3000. Money was tight and Merle declined the offer.

Iowa Lincoln Highway members may recall a frigid due-diligence visit a few years back when a local realtor tried to interest the Iowa LHA officers in an opportunity to purchase the station, with or without junk, for \$35,000. Your wise LHA officers told the realtor no. That was way too much money. What would we have done with it?



While still in Stanwood, today hungry road warriors can stop for a good snack at Ditto's. The sign on the outside corner of the building seems stuck on broasted chicken and catfish. Both are good, as I can attest, and I have the spare tire to prove it. Do any of you remember what was at that location before Ditto's restaurant? Yes, it was a good old-fashioned A&W Root Beer stand complete with car-hops. (I couldn't find a photo; does anyone have a photo of this A&W stand to share?) Inside today's restaurant, there are very subtle hints of its past. They are there. Look carefully. Glass blocks on inside walls in strange places and lumps under the carpet that cause some tables to rock are all that remain of the tasty era of that earlier time. Before WW II, the whole strip where Ditto's stands was corn fields.

That should do it—Food, gas and a spare tire—that's all I need to create an article. **L**

ILHA Officers, Board of Directors, County Consuls, and Staff

Officers

President	Phone	E-Mail Address
Kathy Dirks	(712) 755-7474	kdirks@harrisoncountyparks.org
Vice-President		
Allan Richards	(641) 484-4000	AllanMaxRichards@aol.com
Secretary		
Jeff Benson	(515) 233-1445	melbert@mchsi.com
Treasurer		
Joyce Ausberger	(515) 386-4521	bobjoyce@netins.net
State Director		
Jeff LaFollette	(563) 349-3047	jefflaf@peoplepc.com

Board of Directors (County Consuls)

Clinton County		
Jeff LaFollette	(563) 349-3047	jefflaf@peoplepc.com
Cedar County		
Joe Goodlove	(316) 650-0342	joeiowah30@fbcom.net
Linn County		
Van & Bev Becker		lowaLHA@lmonmail.com
Benton County		
Mike Kelly	(319) 472-5183	mtk@videoportraits.com
Tama County		
Allan Richards	(641) 484-4000	AllanMaxRichards@aol.com
Marshall County		
Harlan Quick	(641) 483-2440	hmquick@partnercom.net
Story County		
Margaret Elbert	(515) 233-1445	melbert@mchsi.com
Boone County		
John Fitzsimmons	(515) 432-3697	seanfitz50@hotmail.com
Ed Mondt	(515) 432-2343	tobes1994@yahoo.com
Greene County		
Bob Owens	(515) 386-3419	jaowens4230@yahoo.com
Joyce Ausberger	(515) 386-4521	bobjoyce@netins.net
Carroll County		
VACANT		
Crawford County		
Deb Rothmeyer	(712) 263-8836	debbie44@frontiernet.net
Harrison County		
Marshall & Rita		
Schichilone	(712) 647-2646	brickstreet@iowatelecom.net
Pottawattamie County		
Charles Willard	(712) 322-5412	moose6969@cox.net

Support Staff

Membership Coordinator		
Cecil Stewart		cstew62@hotmail.com
Newsletter Editor		
Jeff LaFollette		jefflaf@peoplepc.com
Noble Sojourner		
Lyell Henry		disorg@mchsi.com
Iowa Artist in Residence		
John Fitzsimmons		seanfitz50@hotmail.com
Webmistress		
Sandii Huemann-Kelly		shk@videoportraits.com

UPDATE ON IOWA LHA YARD SALE

The Iowa Lincoln Highway Buy Way Yard Sale is being planned and organized for the dates of **August 5, 6, and 7, 2010**. Crawford County Consul **Deb Rothmeyer**, of Denison is leading the effort to put this together across the state. Every community needs to be involved to make this a success. The county consuls are working to talk up the yard sale in their county and help make it a success. Deb is looking for help in putting this together. If you want to be a part of the yard sale, get in touch with Deb. Also, talk with your neighbors, local chambers, and tourism offices in the towns and counties, and talk up the yard sale. To contact Deb, you may call her at **712-263-8836**, or by e-mail at **debbie44@frontiernet.net**. We are looking forward to seeing lots of people having fun buying and selling items and traveling the Lincoln Highway in Iowa on the sale. Remember, make your friends, neighbors and your local press aware of this event. **L**

CHANGES TO YOUR IOWA LHA NEWSLETTER

If you haven't already noticed, in this issue there is a change in the contact information of the Iowa LHA officers, consuls and staff. In this high tech age, we fell behind the times a bit, so we decided to add the e-mail address of the officers, county consuls and staff. This change will make it easier for our members and others to contact our staff. We also have never had the contact information for our Membership coordinator, Cecil Stewart in the newsletter before this issue. Now if you have questions about your membership, or wish to get membership information, you may contact Cecil directly.

We are also looking at offering "**Along the Lincoln Highway**" as an e-newsletter. In this age of "going green" it is not only an option of saving money in printing but saving resources as well. We will have more about this option in the next issue. **L**

HIGH TECH MAPPING OF THE LINCOLN HIGHWAY HERITAGE BYWAY IN IOWA

By Peter Hoehnle

Iowa Valley RC&D Lincoln Highway Project Manager

Through a grant from the Federal Highway Administration, the Iowa Scenic Byways Sustainability project is in the process of mapping all of the byways in Iowa using Trimble handheld GPS units. These units pick up satellite signals that allow the person using the unit to accurately mark the location of businesses, historical sites, and other points of interest along the byways.

Volunteers have already begun work on the Lincoln Highway Heritage Byway, mapping key historical features such as the 1928 concrete markers, historic bridges and segments of original pavement, as well as every building listed on the National Register of Historic Sites that is on or near the route, and public amenities such as restaurants, public restrooms, parks and motels.

Each volunteer borrows the GPS unit from the RC & D office and staff members train them on how to use the unit (it usually takes about 30 minutes) as well as provide them with a list of locations to mark. After the locations have been marked or mapped, the unit is returned to the RC&D office so that the data can be downloaded onto a computer generated map.

The GPS units also take pictures and these pictures are linked to the locations that are marked. As a result, in the future, interactive maps of the Lincoln Highway and other byways in Iowa can be created where a person can click on a point on the map and immediately see a photograph of that location as well as read information about that site.

This mapping project is under the direction of the Northeast Iowa RC&D in Postville in partnership with the Iowa Valley and Golden Hills RC&D's. The staff of the M&M Divide RC&D and the Prairie Rivers RC&D will coordinate volunteers in their counties as the mapping progresses across the state.

The actual GPS mapping of locations will be completed this summer, while work on the maps themselves will go on for several months afterward.

If you are interested in participating in the mapping process, please contact Peter Hoehnle at the Iowa Valley RC&D in Amana at 319-622-3264 or by e-mail at pete@ivrcd.org. **L**

Upcoming LHA State Meetings

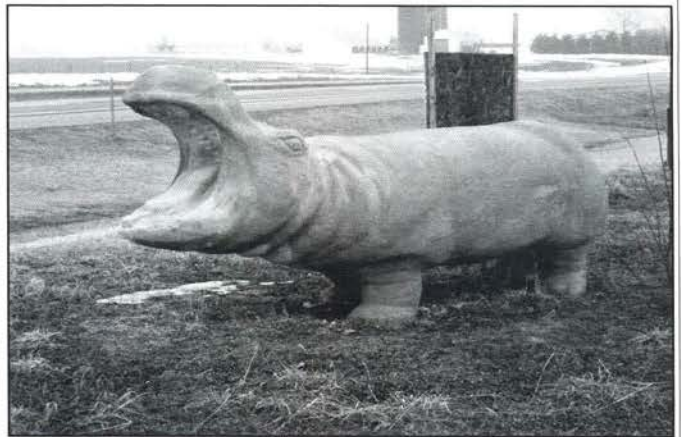
July 10, '10	Belle Plaine
October 9, '10	Clinton
January 8, '11	To Be Determined
April 9, '11	To Be Determined
July 9, '11	To Be Determined

Name That Lincoln Highway Spot

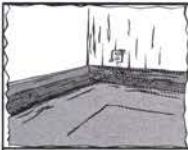
There was not enough room to get the answer and new photo for "Name That Lincoln Highway Spot" in the spring issue, so you all had more time to figure out where it was. Well only one person got the spot, and it was our highway super sleuth, Van Becker from Cedar Rapids. The photo was taken by Bryan Osberg from Urbandale during the 2009 Iowa LHA Motor Tour. The site was along an original section of the LH crossing from Carroll to Greene County. Congrats to Van.



Now, for this issue here is another location along the Iowa Lincoln Highway for you to try to figure out where it is. Yes, this is an actual spot on the road as



you can see the LH in the background of the photo, and you can tell it was taken when the weather was still cold. I won't say whether it is easy or hard but I will say that I would like the specific location. Send your guesses to me at jefflaf@peoplepc.com, and if you are correct, we will print your name for all to see that you too are a road warrior and super sleuth of the highways. Remember, if you have a spot that you wish to try to stump us with, please send your photos of the spot, and information as to its whereabouts and we will gladly include it in another issue Happy hunting. **L**



The President's Corner
 By Kathy Dirks, ILHA President

Happiness is a perfume you cannot pour on others without getting a few drops on yourself.

Ralph Waldo Emerson, American Poet, Lecturer and Essayist (1803-1882)

My full-time employment is being the coordinator for the Harrison County Historical Village and Iowa Welcome Center near Missouri Valley. First and foremost, I am so lucky because 99% of the time I get to meet and work with happy people. Most everyone that stops at our facility is on vacation, and very few people that are on vacation aren't happy. In turn, the volunteers and others that work at the welcome center are cheerful people to begin with but are even more chipper because they get to help happy visitors.

Second, I am so fortunate because I get to constantly hear comments about how great our state is. No matter where our guests hail from, we consistently hear how beautiful Iowa is. How lush and green the landscape is. How friendly the people are. I'd challenge anyone who doesn't have pride in our state to spend a few days with our visitors. I can't imagine how anyone wouldn't think Iowa is a great place after listening to them.

Third, I am so blessed because I get to meet people from all over the United States and from all over the world. Each year, we consistently have visitors from all 50 states and approximately 24 foreign countries. Many of these people are on their way to the Black Hills or some other non-Iowa location. However, I think it would surprise most people how many of our visitors also want to see Iowa and how quite a few of them are traveling all or a portion of the Lincoln Highway.

This is why I have been so excited about the entire Iowa Byways program - especially all the wonderful activities that will be happening with the Iowa Lincoln Highway Heritage Byway. I'm particularly excited about the new signage for the byway. I believe it will be a wonderful way to entice even more visitors to slow-down and take a road less traveled and to further experience the beauty of Iowa through its landscape, communities and people.

Have a great summer and I hope to see you at the next Iowa LHA meeting in Belle Plaine on July 10th.

Happy Traveling

Kathy

NEWSLETTER ADVERTISING RATES

Business card size ad: Single ad placed on an inside page of the newsletter in black and white. The card/ad should be in standard digital format (.jpg) or scanner ready. Double size business cards will double the price.

Rates: 1 issue- \$10 2 issues- \$20

3 or 4 issues- \$30

(Buy three and get 4th free)

Flyer: 1 page 8-1/2 X 11 provided by the customer inserted into our eight page newsletter.

Rates: 1 page flyer- 1 issue- \$50

Please visit our website for more information and to download an advertising rate sheet. Information about advertising on our website is also available. Check us out at:

www.lincolnhighwayassoc.org/iowa

FOR SALE

**Original Bronze Medallion from Lincoln Highway Concrete Marker
 Marked Whitehead-Hong, New Jersey
 \$500.00 Guaranteed Old
 Lynn Christian 515-232-2222**



**Petro Mart Travel Plaza & Junction Café
 I-29 & US 30 Missouri Valley, IA 51555
 712-642-3641**

**Hours: Sunday -Thursday 7:00AM-9:00PM
 Friday-Saturday 7:00AM-10:00PM**

Historic Lincoln Highway Destination

**524 Lincoln Way
 Woodbine, Iowa 51579**



**All LHA Events
 Welcomed
 Catering Available**

**Marshall & Rita Scichilone
 712.647.3030
brickstreet@iowatelecom.net
 Souvenirs—Refreshments**

LINCOLN HIGHWAY SUSTAINABILITY PROJECT CONTACTS**IOWA RC&D-----RESOURCE CONSERVATION AND DEVELOPMENT****Eastern Iowa**(Clinton, Cedar, Linn,
Benton, & Tama counties)Iowa Valley RC&D
920 48TH Ave.
Amana, IA 52203
P 319-622-3264
FAX 319-622-3105RC&D Coordinator:
Chris Taliga
christine.taliga@ia.usda.govLH Project Manager:
Peter Hoehnle
peter@ivrkd.org**Central Iowa**(Marshall, Story, &
Boone counties)Prairie Rivers RC&D
2402 S. Duff Ave.
Ames, IA 50010
P 515-232-0048
FAX 515-233-1131RC&D Coordinator:
John Paulin
john.paulin@ia.usda.govLH Project Contact
Carman Rosburg
crosburg@prcd.org**Western Iowa**(Greene, Carroll, Crawford,
Harrison, and Pottawattamie Counties)M&M Divide RC&D
1917 N. HWY 71
Carroll, IA 51401
P 712-792-4415
FAX 712-792-4239RC&D Coordinator:
John Klein
john.klein@ia.usda.govLH Project Manager:
Francie O'Leary
francieoleary@gmail.com

Iowa has 2 National Scenic byways, 8 state scenic byways, and 1 state heritage byway-the Lincoln Highway. This is a 3 year project that will develop a local steering committee with new focus on promoting all of the byways in the state of Iowa. Specific work tasks will be performed in developing systems and products to facilitate sustainable organizations for the partnering byways located throughout the state of Iowa. Our overall goal is to establish a byway stakeholder group, facilitate the creation of a sustainable byways organization and facilitate revision of the corridor management plan for the Lincoln Highway Heritage Byway. The comprehensive plan will provide the needed planning information to enable byway stakeholders and the organization to successfully implement sustainable byway development, marketing, and promotional activities.

**Congratulations and Thank You very much to
our newest Lincoln Highway
Association Life Member, Paul Walker of
Wilton, Iowa**

**See YOU on the Lincoln Highway!
This issue's new members.**

Shannon Buffington
Daryl Copler
Mary Dehnke
Donald & Grace Hertz
Steve & Marcy Johnson
John Lighty
Lincoln Highway Festival
Jack & Bess McWilliams
Wayne & Nancy Newton
Bill Schlenker
Kristy Tovar
Gene & Darlene Volz
Denise Lofgren
Jon Sullivan

Winfield, Henry
Marion, Linn **L**
Waterloo, Blackhawk
Laurens, Pocahontas
Story City, Story **L**
Solon, Johnson
Clarence, Cedar **L**
Des Moines, Polk
Blairtown, Benton **L**
Ankeny, Polk
Tama, Tama **L**
Perry, Dallas
Rock Island, IL
Gladstone, IL

L (Denotes a Lincoln Highway County)

Joe Moore Steps Down As Boone County Co-Consul- John Fitzsimmons Takes His Place

Longtime Boone County Consul **Joe Moore** has stepped down from the position due to personal reasons. Joe has been a dedicated worker in Boone County getting recognition for the Lincoln Highway in the Boone and Ogden communities. Joe stated in his letter that he and his wife Barb are "still boosters and love the Lincoln Highway". We wish Joe and Barb the very best and hope to see them at future Iowa LHA meetings and events.

John Fitzsimmons who is the Iowa LHA Artist in Residence has agreed to take the spot that was held by Joe. John is a resident of Boone and does fantastic artwork of the Lincoln Highway and has painted the LH marker on poles in Boone County for a number of years. John will hold the co-consul position with **Ed Mondt**. We thank John for stepping forward to take the co-consul position. John is currently working to coordinate the Saturday evening car show event for Boone for this years motor tour. John's contact information can be found on page 3 with the Iowa LHA staff. **L**

COME AND JOIN US FOR THE 3rd ANNUAL
IOWA LINCOLN HIGHWAY ASSOCIATION
RIVER TO RIVER MOTOR TOUR
FROM THE WIDE RIVER TO THE LOESS HILLS
AUGUST 27-29, 2010

FEATURING STOPS IN:
CLINTON, LOWDEN, LISBON, CEDAR RAPIDS, YOUNGVILLE,
TAMA, STATE CENTER, BOONE, JEFFERSON, CARROLL,
DENISON, WOODBINE, CRESCENT

Pre-Tour Event Thursday August 26 in Clinton, IA and Fulton, IL
Visit The Historic Communities of Lowden & Lisbon
Stop at the Youngville Café-Listed on the National Register of Historic Places
See the Famous Lincoln Highway Bridge in Tama
See Historic Downtown State Center
WINERY STOPS IN CLINTON (THURSDAY)
TAMA (SATURDAY) & CRESCENT (SUNDAY)
And Enjoy Plenty of Iowa Small Town Hospitality!

Sponsored by the Iowa Lincoln Highway Association

REGISTRATION FORM

Any Vehicle - Any Model - Any Make

Registration Fee: \$20.00 per vehicle for Iowa LHA members

\$30.00 per vehicle for non-members (Includes one year membership to the Iowa LHA)

You may join or leave the tour at any point or at anytime.

The Iowa LHA is not responsible for accidents or injuries incurred on this motor tour

NAME _____ Phone _____

ADDRESS _____

CITY _____ STATE _____ ZIP _____

E-MAIL _____

Make checks or money orders payable to: Iowa Lincoln Highway Association

Mail To:
Iowa LHA Motor Tour
c/o Jeff LaFollette
2130 W. 4th St.
Davenport, IA 52802

More Tour Information:
Jeff LaFollette
jefflaf@peoplepc.com
563-349-3047

FOLLOW THAT LINCOLN HIGHWAY TWO LANE TO OUR NEXT MEETING IN BELLE PLAINE !

The Iowa Lincoln Highway Association summer meeting takes us to the east central section of the state in Benton County where we will be meeting in Belle Plaine. The meeting will be conducted **Saturday July 10, 2010** at the **Belle Plaine Historical Museum**. The museum is located at 901 12th St. in downtown Belle Plaine. Coffee and rolls will be available at 9:00 AM. President Kathy Dirks will drop the gavel around 9:30 to begin the meeting. There will be many items of discussion, including the motor tour, the buy-way yard sale, and an update on the signage of the Lincoln Highway Heritage Byway. We invite you to attend and see what is going on along the Iowa Lincoln Highway. After the meeting around noon, lunch will be served to us at the museum. Lunch will cost \$7.00 per person, and will consist of croissant sandwiches, chips, salads and dessert and beverage. If you are planning to attend, please contact Jeff LaFollette by e-mail at jef-flaf@peoplepc.com. We hope you can join us at the meeting.

DIRECTIONS: FROM THE EAST- Travel west on US 30 (Lincoln Highway) About 11 miles west of Youngville Café, look for County Road V40. Turn left onto V40 and drive south until you come to a T intersection which is 77th Ave., or county Road E66. Turn right onto E66 and continue west into Belle Plaine, where E66 becomes Henry Tippie Blvd. Look for 12th St. it will veer off to the left. Take 12th St. to the museum.

FROM THE WEST- Travel east across US 30 (Lincoln Highway) Take US 30 to the intersection with IA 21. Turn right onto IA 21 and follow into Belle Plaine. You'll drive past Preston's Station and in the city, you'll be on 13th St. Continue on 13th St until you come to 9th Ave. Turn right onto 9th Ave. and go one block to the museum.

