

SATURDAY JULY 9, THE IOWA LHA MEETS IN BENTON COUNTY AT YOUNGVILLE CAFÉ

Benton County is the place for this quarter's meeting of the Iowa LHA. We will meet on **Saturday July 9, 2011** at **Youngville Café** located on the Lincoln Highway about 18 miles west of Cedar Rapids. Coffee, juice and rolls will be available beginning at 9:00AM. President Allan Richards will begin the meeting around 9:30AM. Afterwards around noon, lunch will be served at the café. The cost of lunch is \$8.00 per person and will consist of a choice of either a tenderloin, hamburger or cheeseburger, with either a lettuce salad or potato salad, a drink and pie for dessert. Contact **Jeff LaFollette** at jefflaf@q.com to make your lunch reservations.

This will be the last meeting before the two big summertime events that the Iowa LHA will conduct in August, the 2nd Iowa Buy-Way yard sale and the 4th Iowa LHA Motor Tour. There will be updates on these items, plus a recap of the national conference and other items for discussion. The new signs are up at Youngville now and hopefully by the meeting they will be up across the state. So you can follow the signs to the meeting. Otherwise the directions are below. It's easy to get there! We hope to see you there!

DIRECTIONS: FROM THE EAST- Travel west on US 30. (Lincoln Highway). Youngville is located about 18 miles west of Cedar Rapids.

FROM THE WEST- Travel east across US 30. (Lincoln Highway) Youngville is located about 11 miles east of the Belle Plaine junction and about 25 miles east of Tama.



In This Issue...

On The Radio, The Signs are Here!!, & Mystery in Clinton

FIRST CLASS

Iowa Lincoln Highway Association
P.O. Box 14
Ogden IA 50212

Along The Lincoln Highway

THE NEWSLETTER OF THE IOWA LINCOLN HIGHWAY ASSOCIATION

Volume 16, Number 2

SUMMER 2011

THE SIGNS ARE HERE, THE SIGNS ARE HERE!!

In the last issue of "*Along The Lincoln Highway*", we proclaimed, The signs are coming. The signs are coming!. Well, if you've traveled the Lincoln Highway lately, you have probably noticed in certain area that indeed that the signs are here. Yes, after many, many years of work, the dream has finally become a reality. The Lincoln Highway is now officially a Heritage Byway and the new signs say it is so. A report from Harlan Quick, Marshall County Consul says: "The new DOT signs marking the route of the historic Lincoln Highway through State Center are up. The Lincoln Highway ran down Main Street, across the railroad tracks at 3rd Ave N., and out past the Kauffman City Park, located across from the new West Marshall Middle School and High School. A loop route, a "temporary" route used from 1913 to 1922, is also marked. It ran along the graveled street north of the high school football field."

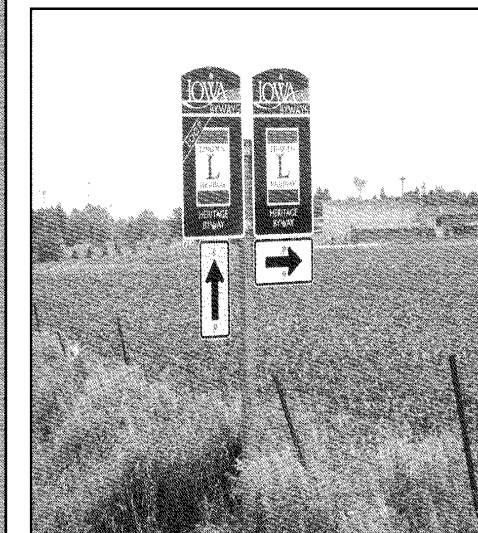
The new signs started going up around Ames and there are two sets of DOT crews working, one going west and another going east, installing the signs. Hopefully by either the Iowa LHA Buy-Way Yard Sale or the Iowa LHA Motor Tour, the installation of the signs will be completed. Either way, travelers will for the first time be able to drive the Iowa LHA using signs and be able to follow the entire route from Clinton to Council Bluffs with signage. Also folks

THE LINCOLN HIGHWAY ASSOCIATION SHALL IDENTIFY, PRESERVE, INTERPRET AND IMPROVE ACCESS TO THE LINCOLN HIGHWAY AND ITS ASSOCIATED SITES. PURSUE THE APPROPRIATE MEASURES TO PREVENT FURTHER DETERIORATION, DESTRUCTION OR ALTERATION OF THE REMAINING SECTIONS, PUBLICIZE AND SEEK PUBLIC AWARENESS OF ITS GOALS AND ACTIVITIES FOR PRESERVING AND DEVELOPING THE LH, FACILITATE RESEARCH ABOUT THE LH, AND PUBLISH A MAGAZINE FOR ARTICLES AND NEWS OF ACTIVITY RELEVANT TO THE LH, WORK WITH LOCAL COMMUNITIES AND BUSINESSES TO PROMOTE THE LH AS A TOURISM DESTINATION, AND BE EXCLUSIVELY CHARITABLE AND EDUCATIONAL WITHIN THE MEANING OF THE INTERNAL REVENUE CODE.

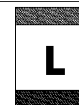
leaving Iowa and travelling into Illinois can now drive over 500 miles of the route in the two states using signage.

So look for the signs when you are out and about on the Lincoln Highway. And let's give a big **THANK YOU** to all of those individuals from the Iowa LHA, the three RC&D offices, the Iowa State Historic Society, and the Iowa DOT along with the 40 plus communities on the route for making this possible.

A side note to this story is that all of Iowa's Scenic Byways will have new signage this year featuring the top portion of the sign seen below in the photo that reads: "Iowa's Byways" Each scenic route will have its own logo. But the Lincoln Highway is the only Heritage Byway, so its status is truly unique to Iowa's Byways.

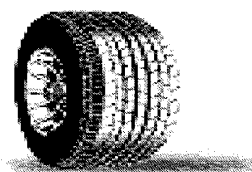


Lincoln Highway Heritage Byway Signs Near State Center (Photo by Harlan Quick)



www.lincolnhighwayassoc.org/iowa

Iowa Lincoln Highway Association
P.O. Box 14
Ogden, Iowa 50212



**HAVE SPARE TIRE,
WILL TRAVEL**

**BY VAN & BEV
BECKER**

**NY2SF Wakes up a Sleepy
One-Stop**

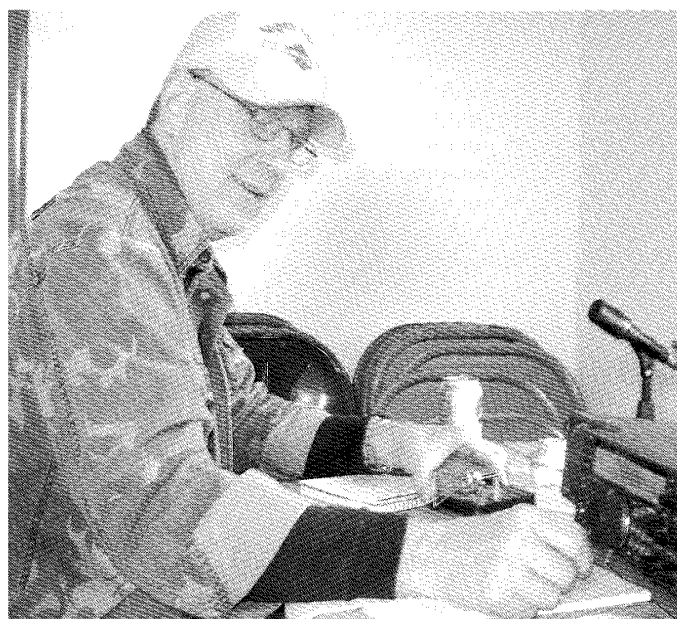
We have done it again! This makes four years in a row—the Lincoln Highway Amateur Radio Group teamed with the Benton County (Iowa) Amateur Radio Club to wake up the sleepy Youngville One-Stop, which at one time included a vintage gas station, café and cabins along the original route of the Lincoln Highway in eastern Iowa. The teams of radio operators erected antennas and set up two shortwave radio stations and then settled in for two days of on-the-air contacts. 32 local amateurs visited our special event. 15 hard workers helped to put up antennas and staffed the radios. The other 17 were uniquely qualified to supervise. This "Special Event" station was celebrating "98 Years on the Lincoln Highway. We did a great job of spreading the word about the Lincoln Highway using our unique call letters, NY2SF (New York to San Francisco). The event was well-advertised in advance and was a highly-sought after radio contact.

Between multiple food and drink breaks, we spoke with almost 500 other stations in 44 states, 3 Canadian provinces, Mexico, Belgium and Spain.

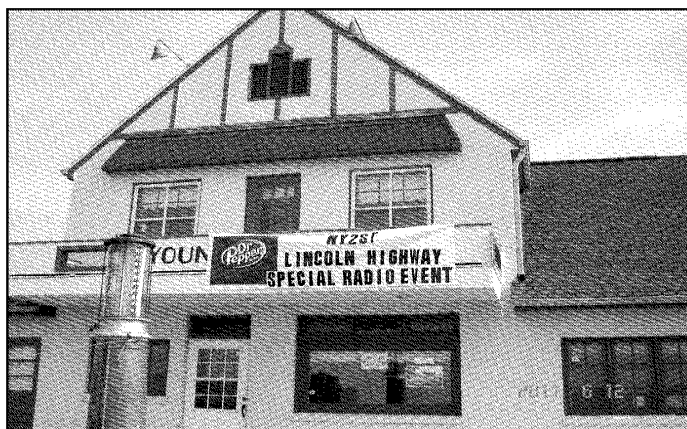
We had a great time and are planning to spread the word of the historic Lincoln Highway, our country's first transcontinental highway, again next year. **L**



Bev, W0WDC, and Dean, K0RN, run a pile-up on 20-meter phone



We brought in a ringer, Wayne, KE0MS, kept the code station smoking (Photos Courtesy of Van & Bev Becker)



Youngville Café sporting a new LH Banner

**JOIN US "4" A GOOD TIME AT THE 4th ANNUAL
IOWA LINCOLN HIGHWAY ASSOCIATION
RIVER TO RIVER MOTOR TOUR
FROM POTTAWATTAMIE TO CLINTON COUNTIES
AUGUST 26-28, 2011**

**FEATURING STOPS IN:
COUNCIL BLUFFS, MISSOURI VALLEY, CARROLL, BOONE,
COLO, LEGRAND, TAMA, YOUNGVILLE, CEDAR RAPIDS,
MOUNT VERNON, WHEATLAND, DEWITT**

Pre-Tour Event Thursday August 25 in Council Bluffs, IA
NEW STOPS: Communities of LeGrand & Wheatland
Group Dinner in Cedar Rapids on Saturday evening, August 27 LOTS OF RAFFLE PRIZES!!
See the Famous Lincoln Highway Bridge in Tama
See Youngville Café-Listed on the National Register of Historic Places
And Enjoy Plenty of Iowa Small Town Hospitality!

Sponsored by the Iowa Lincoln Highway Association

REGISTRATION FORM

Any Vehicle - Any Model - Any Make

Registration Fee: \$20.00 per vehicle for Iowa LHA members

\$30.00 per vehicle for non-members (Includes one year membership to the Iowa LHA)

You may join or leave the tour at any point or at anytime.

The Iowa LHA is not responsible for accidents or injuries incurred on this motor tour

NAME _____ Phone _____

ADDRESS _____

CITY _____ STATE _____ ZIP _____

E-MAIL _____

YEARS ON THE TOUR _____ T-SHIRT SIZES _____ HOW MANY? _____

Make checks or money orders payable to: Iowa Lincoln Highway Association

Mail To:
Iowa LHA Motor Tour
c/o Jeff LaFollette
2130 W. 4th St.
Davenport, IA 52802

More Tour Information:
Jeff LaFollette
jefflaf@q.com
563-349-3047

A LIST OF MOTELS AND TOUR ITINERARY WILL BE MAILED TO YOU SOON
AFTER WE RECEIVE YOUR TOUR REGISTRATION.

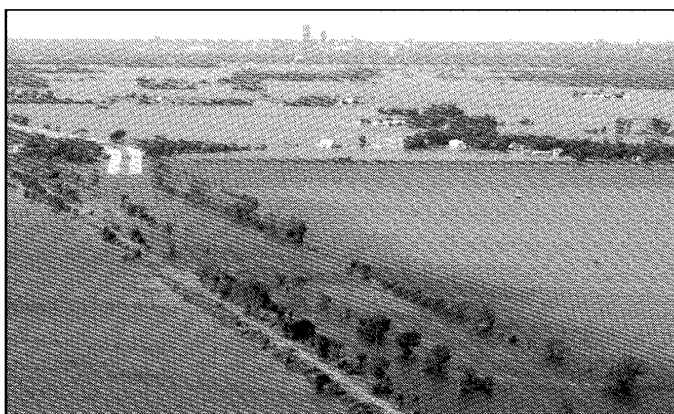
**Niland Café and Colo Motel Updates
By Mike & Sandii Huemann-Kelly**

Iowa LHA members are well aware that the Colo Development Group has been looking for someone to reopen the restored restaurant and manage the six-unit Colo Motel. After visiting Reed-Niland Corner in Colo over the years on various tours and ILHA meetings, ILHA members Sandii Huemann-Kelly and Michael Kelly are working on reopening Niland's Café as this newsletter goes to press.

Sandii reports that interest in the site comes from near and far. As preparations are underway, she's visited with folks from Michigan & Maryland retracing a relative's wedding travels along the Lincoln (and getting autographs in Michael Wallis' book along the way), two sets of visitors from Traer, IA in the same day, and a group from the Czech Republic who happened by during the Thursday evening Colo Farmer's Market held each week at Reed-Niland. Already, visitors mention 'following the signs' - validation that the Lincoln Highway Heritage Byway way finding helps people explore the Lincoln and connect the dots between Iowa's many Lincoln Highway attractions.

Not to be ignored, the Jefferson Highway, which intersects with the Lincoln at the historic Reed-Niland Corner, is another great highway to explore.

Niland Café, will be open in July with the byline "Great Food With a Side of History". The Café will be serving up road food favorites, Niland's ham & bean soup with cornbread, daily specials and, of course, pie and ice cream. The Colo Motel has been open since 2008. Look for Niland Café and Colo Motel on Facebook along with several other new ILHA pages: Iowa Lincoln Highway Motor Tour, Youngville Highway History Association, and the Iowa Lincoln Highway Buy-Way Yard sale. **L**



Missouri River Flooding along I-29 between Honey Creek and Crescent. City of Omaha in the Background (Photo Submitted by Kathy Dirks)

**IOWA LINCOLN HIGHWAY
BUY-WAY YARD SALE COMING
AUGUST 4TH 5TH & 6TH**

Don't forget to mark your calendars for August 4, 5 and 6 for the second annual Iowa Lincoln Highway Association Buy-Way event. This is a state wide yard sale along the 330 mile route of the Lincoln Highway in Iowa. This is Iowa's second year for a yard sale and we join with the states of Illinois, Indiana, Ohio & West Virginia to create a nearly 1000 mile long yard sale for the weekend.

Last year, 31 communities in Iowa participated in the event. This year, there may be close to 40 communities involved. Participants last year came from all over and some even visited yard sales in Iowa, Illinois and Indiana. It is truly a large scale event that promotes the Lincoln Highway as a whole. The eventual goal is to get all 13 states involved in the sale to create a 3389 mile sale which is the total mileage of the entire route of the Lincoln Highway.

Our very heartfelt thanks go to Deb Rothmeyer of Denison for organizing this event for the second year. Deb has worked tirelessly to put this together and make it a successful event. Last year there were 500 yard sales in Iowa, which topped the mark Ohio set in the inaugural year of the yard sale in 2005. Deb is looking to break the 500 mark this year.

If you would like to hold a yard sale in conjunction with this event, please contact Deb at either **712-263-8356** or by e-mail at **debbie44@frontiernet.net**. Deb has a list of people and places that are holding sales and she will put you on her list that will be available to those folks that are traveling the road on the sale.

If you would like to know where the sales in Iowa will be located, again call or e-mail Deb at the information above and get with her to get your list. Let's fill the Lincoln Highway with yard sales and even more people out there driving to and from the sales. Let's make this year the biggest and best! **L**

**See YOU on the Lincoln Highway!
This issue's new members.**

- | | |
|-----------------------|--------------------------------|
| Lynn & Terry Franco | Ames, Story L |
| Paul Fugate | Mechanicsville, Cedar L |
| Patricia Hahn | Boone, Boone L |
| Lisbon History Center | Lisbon, Linn L |
| Norm Nichols | DeWitt, Clinton L |
| Bob & Penny Quinn | Camanche, Clinton L |
| Janet Tait | Boone, Boone L |

L (Denotes a Lincoln Highway County)

**ILHA Officers, Board of Directors,
County Consuls, and Staff**

Officers

President	Phone	E-Mail Address
Allan Richards	(641) 484-4000	AllanMaxRichards@aol.com
Co-Vice Presidents		
Dean & Jeannie Parr	(319) 366-0552	drparr@mchsi.com
Secretary		
Jeff Benson	(515) 233-1445	melbert@mchsi.com
Treasurer		
Joyce Ausberger	(515) 386-4521	bobjoyce@netins.net
State Director		
Jeff LaFollette	(563) 349-3047	jefflaf@q.com

**Board of Directors
(County Consuls)**

Clinton County Jeff LaFollette	(563) 349-3047	jefflaf@q.com
Cedar County Joe Goodlove	(316) 650-0342	joeiowalh30@fbcom.net
Linn County Van & Bev Becker		IowaLHA@lmonmail.com
Benton County Mike Kelly	(319) 472-5183	mtk@videoportraits.com
Tama County Allan Richards	(641) 484-4000	AllanMaxRichards@aol.com
Marshall County Harlan Quick	(641) 483-2440	hmquick@partnercom.net
Story County Margaret Elbert	(515) 233-1445	melbert@mchsi.com
Boone County John Fitzsimmons	(515) 432-3697	seanfitz50@hotmail.com
Ed Mondt	(515) 432-2343	tobes1994@yahoo.com
Greene County Bob Owens	(515) 386-3419	jaowens4230@yahoo.com
Joyce Ausberger	(515) 386-4521	bobjoyce@netins.net
Carroll County VACANT		
Crawford County Deb Rothmeyer	(712) 263-8356	debbie44@frontiernet.net
Harrison County Marshall & Rita Schichilone	(712) 647-2646	
Pottawattamie County Charles Willard	(712) 322-5412	moose6969@cox.net

Support Staff

Directors Emeritus Bob & Joyce Ausberger	bobjoyce@netins.net
Membership Coordinator Dean Parr	drparr@mchsi.com
Newsletter Editor Jeff LaFollette	jefflaf@q.com
Noble Sojourner Lyll Henry	disorg@mchsi.com
Iowa Artist in Residence John Fitzsimmons	seanfitz50@hotmail.com
Webmistress Sandii Huemann-Kelly	shk@videoportraits.com

**BOB & JOYCE
AUSBERGER RECEIVE
HONORARY
DESIGNATION**

At the April Iowa LHA meeting in Colo, State Director Jeff LaFollette made a proclamation to the board of directors to recognize Bob & Joyce Ausberger as Directors Emeritus of the Iowa LHA. The board unanimously approved by acclamation and applause.

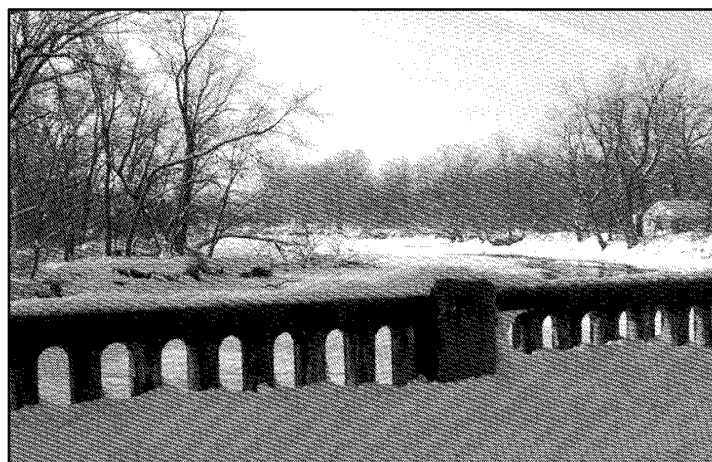
Bob & Joyce received this honorary title for their tireless work for the Iowa Lincoln Highway and the National LHA as well. Bob was a Iowa LHA and National LHA president, and Joyce has been the Iowa LHA treasurer for a number of years. Their title is a ceremonial one, but it is quite an honor to have bestowed upon someone within an organization or business.

Bob and Joyce's new title will be included in the Support Staff listing. Without their efforts, the Iowa & National LHA would not be the organizations they are today. Let's thank them both for a job well done. **L**

**IOWA LHA NEWSLETTER
GOES GREEN WITH
THIS ISSUE**

Beginning with this issue of this newsletter, some of you will receive this newsletter by e-mail. We have started a database of those who wish to receive "Along the Lincoln Highway" electronically by e-mail. We will send you a link to the newsletter by a .pdf file when it is sent to our webmistress Sandii and editor Jeff by our printer, Grant Wood AEA in Cedar Rapids. I will then send it out to those of you who requested an e-mail copy. You may receive a hard copy for this issue as well as we streamline our database. This is a three issue trial period, and your feedback is important to us. We are not discontinuing mailing the newsletter, we are just offering this as an option. If you are interested, contact Jeff at **jefflaf@q.com** to receive an e-copy. **L**

Name That Lincoln Highway Spot



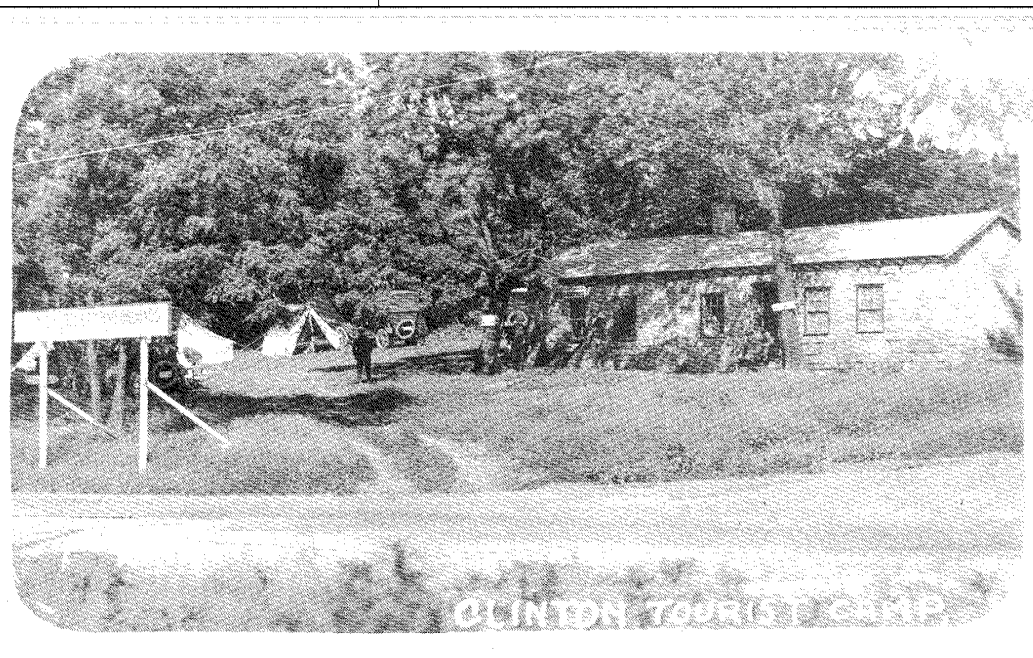
This picture looks inviting on a hot summer day, but it was not too nice in the dead of winter. This picture was submitted by Cathie Nichols of DeWitt, and two people besides the editor got it right. Van Becker of Cedar Rapids and Paul Fugate of Mechanicsville recognized this wintry wonderland as the bridge over the Wapsipinicon River between Calamus and Wheatland about two miles west of the pony truss bridge. Van sent a warmer looking photo of the area that was taken in early April. Congrats to highway sleuths Van and Paul for their sharp eyes and highway smarts.

Now for this issue, we have a real mystery photo. This one comes from, who else but Van Becker. He writes that he knows it was in Clinton, but the real mystery is where was it in Clinton? We are hoping that some of our Clinton County members can give us an idea where this was. This photograph is a wonderful example of very early

Photo submitted by Van & Bev Becker



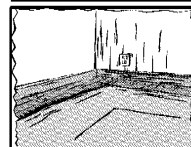
highway history. So please submit your answers to Jeff LaFollette by e-mail at jefflaf@q.com. I'm looking forward to finding out where this area was as well. I'm guessing it was someplace west of the W.F. Coan marker, but I'm hoping it was along the older alignment heading toward Elvira. We'll hopefully know soon. **L**



Upcoming LHA State Meetings

- July 9, '11 Youngville-Benton County
- October 8, '11 Greene County
- January 14, '12 To Be Announced
- April 14, '12 To Be Announced

TO BETTER UPDATE OUR MEMBERSHIP DATABASE, PLEASE SEND YOUR E-MAIL ADDRESS TO OUR MEMBERSHIP DIRECTOR DEAN PARR AT drparr@mchsi.com THIS WAY WE CAN CUT COSTS BY CONTACTING YOU ABOUT MEMBERSHIP RENEWALS BY E-MAIL INSTEAD OF REGULAR MAIL. THANKS FOR YOUR HELP!



The President's Corner

**By Allan Richards,
Iowa LHA President**

The Iowa Lincoln Highway Heritage Byway is officially here, signs in place and route ready for driving. Of course all fanatics realized the route was here, and ready for driving all along.

Since I have the opportunity to drive one or two miles each day in Tama, Iowa, I now picture the route more clearly, as well as, many other travelers will be able to picture the route. The Tama drive now has 24 signs going through town, with half each direction. It is a pleasure to see the signs and enjoy the thoughts of the past and what the future will bring.

The new bridge north of the Lincoln Highway Bridge Park is nearing completion and planning has now begun on the 4 lane east towards Benton County. The issue for the new road will be the turn off towards Chelsea. The plan is to take the whole hill at the intersection going towards Chelsea and make a square corner, thus removing the old park on the corner and a good portion of the old LH route. My vision would be to keep the road in place, improve the park, and dead end the road where the LH joins new 30. This would serve as a place to view the old road, picnic and look out over the Iowa River Valley.

The question lurking in my thoughts is how the Lincoln Highway Association could more effectively influence the decision makers concerning the future. As many may agree, most elected officials have little concern other than polite lip service to ideas and projects. We do need all the voices we are able to put together, projects to pursue and educational opportunities to promote.

As I continue on to Benton and Linn County, as I do at least once a week, I am proud of the Lincoln Highway efforts. The one item that we may be able to promote in Cedar Rapids is the marking and development of the new "Cedar Rapids Automobile Historic District". In talking with political people there about the closing of a portion of 2nd Avenue, and the tearing down of the parking garage on 3rd Ave. and 1st St., the city is to invest in preservation efforts to promote the importance of the automobile and the Lincoln Highway. Will this be completed and will the city follow through on promises?

My answer would be to continue my drive along the Abraham Lincoln Memorial Highway through Cedar Rapids. Saying to the leaders that as I drive the route, and come upon Green Square Park, I would find myself at a site that has a nice monument to the Lincoln Highway, a row of historical places to visit, and a modern interactive computer terminal that would assist me with my questions about the past, the present and the future as I visit the city.

With the National Scenic Byways and All American Roads, an effort to create a forum or idea sharing site for our efforts has been in discussion. As suggested in

the past, wanted are your stories or ideas, it is only a matter of taking the time to send over your thoughts and words. The suggestion is to create a link onto the web site to share files, create a forum on a commercial site, or as I say, let us just get going. Assigned is the dedicated email (temporary until?) address of LincolnByway@aol.com wherein, I will collect, store and hopefully be able make something good for the future in the new age of the internet highway. We must start as many have, and continue to work to add to this great road work of the past.

All that is being asked is to encourage you and others to share with everyone the direction you desire for the future success of the Lincoln Highway Association and the betterment of the Lincoln Highway. Respectfully yours:

Allan

FOR SALE
Original Bronze Medallion from
Lincoln Highway
Concrete Marker
Marked Whitehead-Hong,
New Jersey
\$500.00 Guaranteed Old
Lynn Christian 515-232-2222

NEWSLETTER ADVERTISING RATES

Business card size ad: Single ad placed on an inside page of the newsletter in black and white. The card/ad should be in standard digital format (.jpg) or scanner ready. Double size business cards will double the price.

Rates: 1 issue- \$10 2 issues- \$20
3 or 4 issues- \$30
(Buy three and get 4th free)

Flyer: 1 page 8-1/2 X 11 provided by the customer inserted into our eight page newsletter.

Rates: 1 page flyer- 1 issue- \$50

Please visit our website for more information and to download an advertising rate sheet. Information about advertising on our website is also available. Check us out at:

www.lincolnhighwayassoc.org/iowa