



# ALONG THE LINCOLN HIGHWAY



*THE NEWSLETTER OF THE IOWA LINCOLN HIGHWAY ASSOCIATION*

**Volume 14, Number 4**

**WINTER 2009**

## PAIR TRAVELS LENGTH OF JEFFERSON HIGHWAY, VISITS LH TOWN OF COLO

Mike Conlin and his driver Gary, (whose last name we didn't get) took a unique tour of the Jefferson Highway by driving the entire length of the road from Winnipeg, Manitoba, to New Orleans, Louisiana. Their trek began on November 1 in Winnipeg and ended November 26 in New Orleans. The pair stopped in Colo on November 9, at the intersection of the Lincoln and Jefferson Hwys. at the Reed/Niland Corners. There, they were greeted by Scott Berka and members of the Colo Development Group. Lincoln Highway Noble Sojourner, Lyell Henry was there to meet the duo and to share some information on the Jefferson Highway in Iowa.



Mike Conlin and his driver Gary pointing out that the Jefferson Highway was also known as the Pines to Palms Highway (Photo by Scott Berka)

THE LINCOLN HIGHWAY ASSOCIATION SHALL IDENTIFY, PRESERVE, INTERPRET AND IMPROVE ACCESS TO THE LINCOLN HIGHWAY AND ITS ASSOCIATED SITES, PURSUE THE APPROPRIATE MEASURES TO PREVENT FURTHER DETERIORATION, DESTRUCTION OR ALTERATION OF THE REMAINING SECTIONS, PUBLICIZE AND SEEK PUBLIC AWARENESS OF ITS GOALS AND ACTIVITIES FOR PRESERVING AND DEVELOPING THE LH, FACILITATE RESEARCH ABOUT THE LH, AND PUBLISH A MAGAZINE FOR ARTICLES AND NEWS OF ACTIVITY RELEVANT TO THE LH, WORK WITH LOCAL COMMUNITIES AND BUSINESSES TO PROMOTE THE LH AS A TOURISM DESTINATION, AND BE EXCLUSIVELY CHARITABLE AND EDUCATIONAL WITHIN THE MEANING OF THE INTERNAL REVENUE CODE.

The Jefferson Highway was conceived at a meeting in New Orleans in 1915, two years after the Lincoln Highway was founded. The highway was officially dedicated in 1919. Like the Lincoln it was a named highway for only a few years, and became a numbered route in 1926. The Jefferson follows the routes of US 65 and US 69 through Iowa. A map on the site shows that part of the original 1916 route went from Colo to Ames, as the Lincoln and Jefferson shared a common route for a few years.

To learn more about Mike's trip and the Jefferson Highway, go to his website [www.jeffersonhighway.com](http://www.jeffersonhighway.com). There are maps, history and other links to check out. On the upper left hand corner, there is a Facebook icon. Click that to follow Mike's complete trip from Winnipeg to New Orleans L



The Winnebago making the tour down the Jefferson Highway at the Reed/Niland corners in Colo, Iowa (Photo courtesy of Scott Berka)

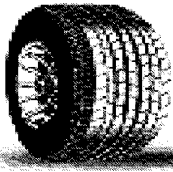


**IOWA LINCOLN HIGHWAY ASSOCIATION  
P.O. BOX 14  
OGDEN, IOWA 50212**

[www.lincolnhighwayassoc.org/iowa](http://www.lincolnhighwayassoc.org/iowa)

PHOTO COURTESY OF SCOTT BERKA

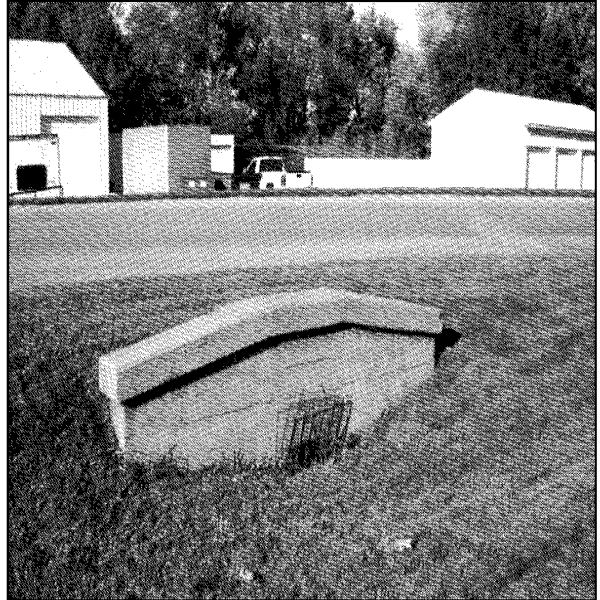
# HAVE SPARE TIRE, WILL TRAVEL



**BY VAN & BEV  
BECKER**

You have been out all summer driving the Lincoln Highway. Right? So you and your passenger in the right-hand seat know all the sights. Right? Let's see how well you do with a quick quiz! Just think of this as a navigator's test.

Jeff has assured me that he will find room in this issue for the answer key so there will be no long wait for the answers. At the next meeting, let me know how you did. Hint—the photos span the state. Do you know all four? Good Luck! (Photos courtesy of Van & Bev Becker)

**1****2****3****4**

## LINCOLN HIGHWAY ENDOWMENT FUND 2010 GRANT PROGRAM

By Jeff LaFollette, Iowa LHA State Director

Grant awards are being made available from the Lincoln Highway Association Endowment Fund for the purpose of furthering the Lincoln Highway cause and for assisting state LHA chapters in their efforts. State chapters are encouraged to develop projects and to seek grant awards to support these projects.

The Lincoln Highway Association Board of Directors (at the national level) will annually determine a dollar amount to be awarded to successful applicants, based on budget recommendations of the LHA Endowment Committee. Awards will be made at the Association's annual conference each year. The first round of grants were awarded at the Fort Morgan, Colorado conference in 2007. Iowa has received grants in each of the last two years. The number of awards to be made annually will be at the discretion of the Endowment Committee but will typically be a total of two each year. A maximum \$5000 award may be made to any applicant in any one year. Applicants may apply each successive year for multi-year awards, thus if successful, increasing the total award for a given project to an amount in excess of the \$5000 annual limit. The Endowment Fund grant program will be administered on an annual "grant round" basis, with each grant round beginning the day following the LHA annual conference and ending at the time during the conference when grants are announced for the next year.

Applications are due no later than **March 1, 2010**. Applications are to be submitted to the LHA Endowment Committee. Applicants do not need to complete any special or mandatory form of application, although an application shall be a typewritten submittal that addresses the relevant scoring criteria set forth below. In other words, an applicant should fully explain how its proposed project satisfies any or all of the scoring criteria. Application submittals shall be limited to five single spaced pages.

As appropriate, attachments will be considered, but the LHA Endowment Committee generally has expressed a preference for precise, rather than lengthy applications.

If you have a worthy project that you want to have considered for a grant in 2010, contact me either by phone or e-mail ([jefflaf@peoplepc.com](mailto:jefflaf@peoplepc.com)) and I will send you a complete copy of the Grant Applications and Awards Program Sheet so you can look it over, and check the scoring criteria, and read over other items to help you in preparing your application. When you complete an application, you may send it

to me and I will forward it to the Endowment Committee Chairman.

You may also contact the Endowment Committee Chairman, **Bob Dieterich**. Bob's address is **4521 Woodmont Ct. Fair Oaks, CA 95628**. He can be reached by phone at **916-967-7680** and his e-mail address is [bobd@sbcglobal.net](mailto:bobd@sbcglobal.net). **Bob Ausberger** of Jefferson, IA is a member of the Endowment Committee and would be most helpful to you as well. His phone number is **515-386-4821** and his e-mail is [bob-joyce@netins.net](mailto:bob-joyce@netins.net)

We look for someone from Iowa to apply and hopefully receive a grant at the 2010 National Conference in Dixon, Illinois. Don't forget, if you have any questions regarding the grant applications, contact us soon. Time to get grants submitted for the 2010 grant round period is running out! **L**

## IOWA TO PARTICIPATE IN LINCOLN HIGHWAY BUY-WAY YARD SALES IN 2010

This year, Iowa will become the fifth state to be a part of the Lincoln Highway Buy-Way Yard Sale. This year the yard sale dates are **August 5, 6, and 7, 2010** (Thursday-Saturday) The yard sale began in Ohio in 2005 and was a huge success. The yard sales then spread to the Lincoln Highway states of West Virginia, Indiana, and Illinois. Adding Iowa to the list will make the total mileage of yard sales along the Lincoln Highway at over 900 miles.

The concept is to have the "World's Longest Yard Sale" as well as bring awareness to the Lincoln Highway. The Ohio LHA reports that the yard sale brings a lot of revenue to LH communities. People will overnight in motels to take advantage of sales across the state, and we hope that the same thing will happen in Iowa.

Crawford County Consul **Deb Rothmeyer**, of Denison has volunteered to lead the effort to put this together across the state. Every community needs to be involved to make this a success. The county consuls will be called on to talk up the sale in their county. Deb will be looking for help in putting this together. If you want to be a part of the yard sale, get in touch with Deb. Also, talk with your neighbors, local chambers and tourism offices either in towns or counties, and talk up the yard sale. To contact Deb, you may call her at **712-263-8836**, or by e-mail at [deb-bie44@frontiernet.net](mailto:deb-bie44@frontiernet.net). We are looking forward to seeing lots of people having fun buying and selling items and traveling the Lincoln Highway in Iowa on the sale. Remember, let your friends and neighbors know about this and we'll keep you updated in the newsletter and on our website as well. **L**

### Spare Tire/Mystery Photo Answers:

1. The Lincoln Highway Marker by the Dr. Pepper Machine—I'm sure Jeff L recognized it immediately. Did you? This is the marker at the top of the business district hill next to the old bank that became a location for telemarketers on the corner of Iowa Street and 6<sup>th</sup> Street in Dunlap.
2. This mystery culvert is included for our culvert expert, Bob Ausberger. This nicely groomed structure is on the LH in State Center at the corner of Main Street and 5<sup>th</sup> Avenue. This culvert is on the 2<sup>nd</sup> and 3<sup>rd</sup> routes of the LH through town.
3. The miniature post office is in the big city of Beaver on the original LH.
4. This bridge is on the Bloomington Road near the intersection with Bliss Road between the cities of Marion and Mt. Vernon. The Bloomington Road was a county seat to county seat trail long before it was designated as the Lincoln Highway in 1913. In 1919 shortly after this bridge was built, Marion lost the county seat to Cedar Rapids and lost the LH to the improved Mt. Vernon Road going straight into Cedar Rapids. This road, the 1913-1919 LH, is still gravel. It has never been paved.

So how did you and your navigator do? Keep your eyes on the real road, the LH. L

## 2010 IOWA LHA MOTOR TOUR PLANNING IN HIGH GEAR

It's hard to believe that it's only been four months since the 2nd Iowa LHA Motor Tour concluded. If you missed out on the first two tours, maybe the third time will be the charm. Plan to join us on the 3rd Annual Iowa LHA Motor Tour from **August 27-29, 2010**. This time the tour will go from east to west, beginning in Clinton and ending in Crescent. Last year's tour featured three wineries along the way, and they were such a hit that we are planning on stopping at four, including one in Clinton on the **Thursday August 26** pre-tour event. The theme for the motor tour is "From the Wide River to the Loess Hills", starting with the Wide River Winery in Clinton, during the pre-tour, and ending at the Loess Hills Winery in Crescent.

The cost to come on the tour is the same as the past two years, \$20 per car for ILHA members, and \$30 per car for non-ILHA members. Non-members will receive a one year membership to the Iowa LHA when they sign up. You can join us for one, two or all three days and you can join us and leave us at any point along the way.

Stops already in the works include Clinton, Lisbon, Cedar Rapids where we will overnight on Friday, Youngville, State Center, Boone, where we will be spending the night on Saturday, Carroll, Woodbine and Crescent. Oh yes, we plan on two more wine stops, one east of Tama and the other in Carroll. There is a registration form in this newsletter and there will be a tour flyer on the website soon. Watch our website for updates and we hope you can join us again, or for the first time on the tour this summer L

### ILHA Officers, Board of Directors (County Consuls), and Staff

#### Officers

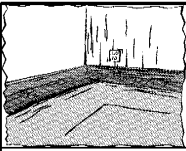
<b>President</b>	Kathy Dirks	(712) 755-7474
<b>Vice-President</b>	Allan Richards	(641) 484-4000
<b>Secretary</b>	Jeff Benson	(515) 233-1445
<b>Treasurer</b>	Joyce Ausberger	(515) 386-4521
<b>State Director</b>	Jeff LaFollette	(563) 349-3047

#### Board of Directors (County Consuls)

<b>Clinton County</b>	Jeff LaFollette	(563) 349-3047
<b>Cedar County</b>	Joe Goodlove	(316) 650-0342
<b>Linn County</b>	Van & Bev Becker	IowaLHA@lmonmail.com
<b>Benton County</b>	Mike Kelly	(319) 472-5183
<b>Tama County</b>	Allan Richards	(641) 484-4000
<b>Marshall County</b>	Harlan Quick	(641) 483-2440
<b>Story County</b>	Margaret Elbert	(515) 233-1445
<b>Boone County</b>	Joe Moore	(515) 432-6174
	Ed Mondt	(515) 432-2343
<b>Greene County</b>	Bob Owens	(515) 386-3419
	Joyce Ausberger	(515) 386-4521
<b>Carroll County</b>	VACANT	
<b>Crawford County</b>	Deb Rothmeyer	(712) 263-8836
<b>Harrison County</b>	Marshall & Rita Schichilone	(712) 647-2646
<b>Pottawattamie County</b>	Charles Willard	(712) 322-5412

#### Support Staff

<b>Membership Coordinator</b>	Cecil Stewart
<b>Newsletter Editor</b>	Jeff LaFollette
<b>Noble Sojourner</b>	Lyell Henry
<b>Iowa Artist in Residence</b>	John Fitzsimmons
<b>Webmistress</b>	Sandii Huemann-Kelly
	shk@videoportraits.com



**The President's Corner**  
 By Kathy Dirks, ILHA President

**"Snow and adolescence are the only problems that disappear if you ignore them long enough."**

- Earl Wilson, Columnist (1907 – 1987)

I am writing this on December 8<sup>th</sup> during what's predicted be a major snowstorm for a large portion of Iowa. Considering the long list of business/school closings scrolling across the bottom of my TV screen and that I can barely see one block when I look out my living room window, I think the meteorologists may be right on this one.

This reminds me that it's a good time to share the ILHA policy in regards to canceling membership meetings due to weather. After discussing the pros and cons of meeting cancellation, it was decided that ILHA meetings would not be cancelled due to weather. Since weather can vary greatly from one side of the state to the other, it was decided that those who are able to attend meetings should be allowed to attend the quarterly meetings. However, I'd like to stress that personal safety is the number one concern so use your best judgment and don't travel if you don't feel it's safe to do so. Meanwhile, I hope our January 9<sup>th</sup> meeting in Colo is in the middle of a "January thaw" so snow isn't an issue.

Of the many items discussed at our October meeting, one of the newest is that Iowa will be participating in the Lincoln Highway Buy-Way Yard sale this year! A big thank you goes to Deb Rothmeyer, Crawford County Consul, for volunteering to spearhead this state-wide yard sale along the Lincoln Highway. Originally started in Ohio in 2005 to garner recognition and tourism along the Lincoln Highway, the "Buy Way" has spread into West Virginia, Indiana, Illinois, and now Iowa. Dates for 2010 are August 5, 6 and 7 - the first full weekend (Thursday, Friday and Saturday) in August. Deb will be calling upon county consuls to help with the process, and will be looking for other volunteers to assist. Please watch this newsletter for additional information as the dates get closer.

A reminder that the National Lincoln Highway Association Conference will be right next door in Dixon, Illinois on June 22 – 26, 2010. I've had the opportunity to attend twice, hope to do so again in 2010, and encourage those of you that are able to do so as well. The conferences always include great tours, good food, and lots of fun with other Lincoln Highway enthusiasts. Additional conference information should be posted on the national website, [www.lincolnhighwayassoc.org](http://www.lincolnhighwayassoc.org), soon and will probably be included in the next edition of *The Lincoln Highway Forum* as well.

I wish you and yours a Blessed 2010 and hope to see you in Colo on January 9<sup>th</sup>! Happy Traveling!

**Kathy**

**NEWSLETTER ADVERTISING RATES**

Business card size ad: Single ad placed on an inside page of the newsletter in black and white. The card/ad should be in standard digital format (.jpg) or scanner ready. Double size business cards will double the price.

**Rates: 1 issue- \$10 2 issues- \$20**

**3 or 4 issues- \$30**

**(Buy three and get 4th free)**

Flyer: 1 page 8-1/2 X 11 provided by the customer inserted into our eight page newsletter

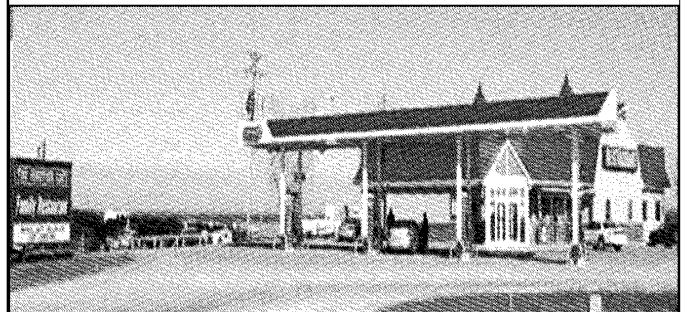
**Rates: 1 page flyer- 1 issue- \$50**

Please visit our website for more information and to download an advertising rate sheet. Information about advertising on our website is also available. Check us out at:

[www.lincolnhighwayassoc.org/iowa](http://www.lincolnhighwayassoc.org/iowa)

**FOR SALE**

**Original Bronze Medallion from Lincoln Highway Concrete Marker  
 Marked Whitehead-Hong, New Jersey  
 \$500.00 Guaranteed Old  
 Lynn Christian 515-232-2222**



**Petro Mart Travel Plaza & Junction Café  
 I-29 & US 30 Missouri Valley, IA 51555  
 712-642-3641**

**Hours: Sunday -Thursday 7:00AM-9:00PM  
 Friday-Saturday 7:00AM-10:00PM**

*Historic Lincoln Highway Destination*

**524 Lincoln Way  
 Woodbine, Iowa 51579**



**All LHA Events  
 Welcomed  
 Catering Available**

**Marshall & Rita Scichilone  
 712.647.3030  
[brickstreet@iowatelecom.net](mailto:brickstreet@iowatelecom.net)  
 Souvenirs—Refreshments**



# LINCOLN HIGHWAY SUSTAINABILITY PROJECT CONTACTS

## IOWA RC&D-----RESOURCE CONSERVATION AND DEVELOPMENT

**Eastern Iowa**

(Clinton, Cedar, Linn, Benton, & Tama counties)

Iowa Valley RC&D  
920 48<sup>TH</sup> Ave.  
Amana, IA 52203  
P 319-622-3264  
FAX 319-622-3105

RC&D Coordinator:  
Chris Taliga  
[christine.taliga@ia.usda.gov](mailto:christine.taliga@ia.usda.gov)

LH Project Manager:  
Peter Hoehnle  
[peter@ivrcd.org](mailto:peter@ivrcd.org)

**Central Iowa**

(Marshall, Story, & Boone counties)

Prairie Rivers RC&D  
2402 S. Duff Ave.  
Ames, IA 50010  
P 515-232-0048  
FAX 515-233-1131

RC&D Coordinator:  
John Paulin  
[john.paulin@ia.usda.gov](mailto:john.paulin@ia.usda.gov)

LH Project Contact  
Carman Rosburg  
[crosburg@prrcd.org](mailto:crosburg@prrcd.org)

**Western Iowa**

(Greene, Carroll, Crawford, Harrison, and Pottawattamie Counties)

M&M Divide RC&D  
1917 N. HWY 71  
Carroll, IA 51401  
P 712-792-4415  
FAX 712-792-4239

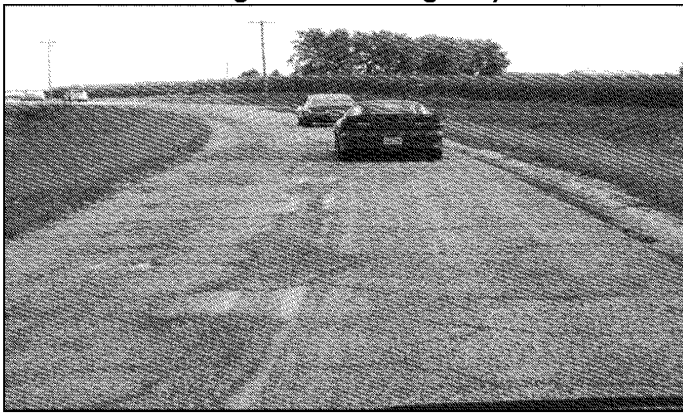
RC&D Coordinator:  
John Klein  
[john.klein@ia.usda.gov](mailto:john.klein@ia.usda.gov)

LH Project Manager:  
Francie O'Leary  
[francieoleary@gmail.com](mailto:francieoleary@gmail.com)

*Iowa has 2 National Scenic byways, 8 state scenic byways, and 1 state heritage byway-the Lincoln Highway. This is a 3 year project that will develop a local steering committee with new focus on promoting all of the byways in the state of Iowa. Specific work tasks will be performed in developing systems and products to facilitate sustainable organizations for the partnering byways located throughout the state of Iowa. Our overall goal is to establish a byway stakeholder group, facilitate the creation of a sustainable byways organization and facilitate revision of the corridor management plan for the Lincoln Highway Heritage Byway. The comprehensive plan will provide the needed planning information to enable byway stakeholders and the organization to successfully implement sustainable byway development, marketing, and promotional activities.*

### Name That Lincoln Highway Spot

Here we go again... Another edition of Name that Lincoln Highway Spot. This photo was taken by Bryan Osberg from Urbandale, IA on the 2009 Motor Tour. We are looking for the general location of this section of roadway, either the county, or between which communities. Here's a hint: It's an original alignment of the LH. Submit your guess to Jeff LaFollette at [jef-flaf@peoplepc.com](mailto:jef-flaf@peoplepc.com) and we'll print your name in the next issue of "Along The Lincoln Highway" L



### Upcoming LHA State Meetings

January 9, '10	Colo
April 10, '10	Denison
July 10, '10	Belle Plaine
October 9, '10	Clinton

### See YOU on the Lincoln Highway! This issue's new members.

Anthony Ames	Boone, Boone L
Larry Lindgren	Kingsley, Plymouth
Sports Leisure Vacations	Sacramento, CA

L (Denotes a Lincoln Highway County)

**PLAN AHEAD FOR 2010  
THE NATIONAL LINCOLN HIGHWAY  
CONFERENCE WILL BE IN DIXON, ILLINOIS  
JUNE 22-26, 2010  
CHECK THEIR WEBSITE FOR UPDATES  
WWW.LINCOLNHIGHWAYASSOC.ORG/IL**

COME AND JOIN US FOR THE 3rd ANNUAL  
IOWA LINCOLN HIGHWAY ASSOCIATION  
RIVER TO RIVER MOTOR TOUR  
FROM THE WIDE RIVER TO THE LOESS HILLS  
AUGUST 27-29, 2010

FEATURING STOPS IN:  
CLINTON, LOWDEN, LISBON, CEDAR RAPIDS, YOUNGVILLE,  
TAMA, STATE CENTER, BOONE, JEFFERSON, CARROLL,  
DENISON, WOODBINE, CRESCENT

Pre-Tour Event Thursday August 26 in Clinton, IA and Fulton, IL  
Visit The Historic Communities of Lowden & Lisbon  
Stop at the Youngville Café-Listed on the National Register of Historic Places  
See the Famous Lincoln Highway Bridge in Tama  
See Historic Downtown State Center  
WINERY STOPS IN CLINTON (THURSDAY) TAMA (SATURDAY)  
CARROLL & CRESCENT (SUNDAY)  
And Enjoy Plenty of Iowa Small Town Hospitality!

*Sponsored by the Iowa Lincoln Highway Association*



REGISTRATION FORM

Any Vehicle - Any Model - Any Make

Registration Fee: \$20.00 per vehicle for Iowa LHA members

\$30.00 per vehicle for non-members (Includes one year membership to the Iowa LHA)

You may join or leave the tour at any point or at anytime.

The Iowa LHA is not responsible for accidents or injuries incurred on this motor tour

NAME \_\_\_\_\_ Phone \_\_\_\_\_

ADDRESS \_\_\_\_\_

CITY \_\_\_\_\_ STATE \_\_\_\_\_ ZIP \_\_\_\_\_

E-MAIL \_\_\_\_\_

Make checks or money orders payable to: Iowa Lincoln Highway Association

Mail To:  
Iowa LHA Motor Tour  
c/o Jeff LaFollette  
2130 W. 4<sup>th</sup> St.  
Davenport, IA 52802

More Tour Information:  
Jeff LaFollette  
jefflaf@peoplepc.com  
563-349-3047



## Let's Hope For Mild Temps And No Snow So We Can Meet Together In Colo

January rings in a new year and a new decade. The Iowa LHA will be entering its 18th year in 2010. We are planning a 3rd annual Motor Tour this coming year. And we are planning our 1st state wide yard sale! We invite you to join us for our first meeting of the new year and new decade in Colo on **Saturday January 9, 2010**

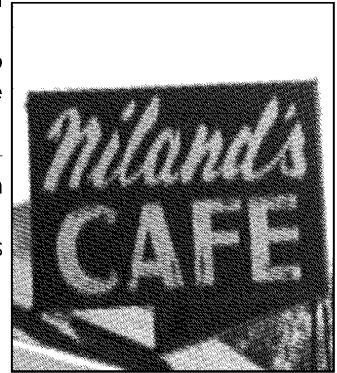
The meeting will be conducted at Niland's Café at the Reed/Niland Corners in Colo where the Lincoln and Jefferson Highways meet. Coffee & pastries will be served at 9:00 at the café. President Kathy Dirks will drop the gavel around 9:30 to begin the meeting. The meeting will last until around noon. Lunch will be served at Niland's Café, and the cost will be \$7.00 per person. Last year the weather played havoc on us, and that's why we are hoping for mild temperatures and no snow. Hopefully the weatherman will oblige us. So please join us for a day of fun and fellowship and come and see what the Iowa LHA has planned for 2010.

The Colo Motel has six rooms available at **\$49.99 per night**, for those of you who might wish to travel the day before and stay overnight. Contact Scott Berka with the Colo Development Group at **641-377-2278** or **877-234-2656** to reserve a room.

**DIRECTIONS: FROM THE EAST-** Travel west on US 30 (Lincoln Highway). At the intersection with US 65, take US 65 north. Follow north to the intersection with the Lincoln Highway and exit off of US 65. Turn left and cross over US 65 to Niland's Café.

**FROM THE WEST-** Travel east across US 30 (Lincoln Highway) Follow the directions as they are listed above.

If you plan to attend the meeting and lunch, please RSVP to Jeff LaFollette at [jefflaf@peoplepc.com](mailto:jefflaf@peoplepc.com), so we can give the folks in Colo a total count. L



In This Issue...

**Pair Visits Colo on Jefferson Highway Trip & Spare Tire Photo Quiz!**

**FIRST CLASS**

Iowa Lincoln Highway Association  
P.O. Box 14  
Ogden IA 50212