



ALONG THE LINCOLN HIGHWAY



THE NEWSLETTER OF THE IOWA LINCOLN HIGHWAY ASSOCIATION

Volume 12, Number 2

SUMMER 2007

Full Speed Ahead for 2008 Lincoln Highway Motor Tour

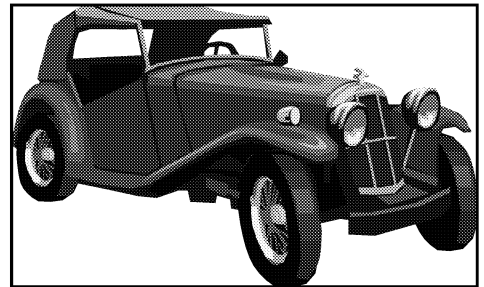
By Jeff LaFollette, State Director

The first third of the route for the 2008 Iowa Lincoln Highway Motor Tour from Clinton to Cedar Rapids is mapped out, and mapping for the second leg of the tour from Cedar Rapids to either Ames or Boone is being planned to be driven after the national conference. By the July meeting, mapping this leg of the tour should be complete. We are continuing to make plan for this event in 2008. Dates have been set and it will be held from August 8-10, 2008. The tour will leave Clinton on Friday morning and overnight in Cedar Rapids with several stops planned along the way. The second day (Saturday) will begin with a breakfast in Cedar Rapids, and will end with a group dinner in Ames or Boone. The third day (Sunday) will start in Boone and end near Council Bluffs, most likely at the Hitchcock Nature Center in Pottawattamie County. We are also working on getting "goody bags" for each car along with window decals and possibly dash plaques. A cost for the tour has not been set yet, that should be determined by the next issue of this newsletter.

This will be the first statewide tour of its kind for the Iowa Lincoln Highway Association, and we are hoping for a large turnout. Being this is an inaugural event, we have no idea how many cars and people will attend. I have a number in mind but I will wait until a future issue of the newsletter to share that with all of you.

THE LINCOLN HIGHWAY ASSOCIATION SHALL IDENTIFY, PRESERVE, INTERPRET AND IMPROVE ACCESS TO THE LINCOLN HIGHWAY AND ITS ASSOCIATED SITES. PURSUE THE APPROPRIATE MEASURES TO PREVENT FURTHER DETERIORATION, DESTRUCTION OR ALTERATION OF THE REMAINING SECTIONS, PUBLICIZE AND SEEK PUBLIC AWARENESS OF ITS GOALS AND ACTIVITIES FOR PRESERVING AND DEVELOPING THE LH, FACILITATE RESEARCH ABOUT THE LH, AND PUBLISH A MAGAZINE FOR ARTICLES AND NEWS OF ACTIVITY RELEVANT TO THE LH, WORK WITH LOCAL COMMUNITIES AND BUSINESSES TO PROMOTE THE LH AS A TOURISM DESTINATION, AND BE EXCLUSIVELY CHARITABLE AND EDUCATIONAL WITHIN THE MEANING OF THE INTERNAL REVENUE CODE.

Of course, we encourage any and all of you who are even thinking about at-



tending the motor tour, and own a classic car to bring it on the tour. We want to parade the cars through towns, because classic cars pique people's interest.

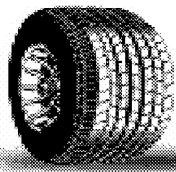
Even though the tour is a little over a year away, I would like to gauge the interest that the membership has in participating. Please tell your friends about it too, we want to get those who don't know much about the Lincoln Highway interested in and have them come back for a future tour, and bring their friends.

If you have an interest in participating in the 2008 Iowa LHA Motor Tour, drop me an e-mail. (jefflaf@peoplepc.com) Then I can report what I have heard from our members so far at the meeting in October. I am hoping by October to have a tentative flyer with the tour cost, motel options in all the communities we will overnight in and tour stops. Registration forms should be available in January, either in the newsletter or on our website: www.lincolnhighwayassoc.org/iowa. I look forward to hearing from you, and hopefully the number I'm thinking about will be realized. Thanks to all of you for your support of the Iowa LHA and all of our activities. **L**



www.lincolnhighwayassoc.org

**IOWA LINCOLN HIGHWAY ASSOCIATION
P.O. BOX 14
OGDEN, IOWA 50212**



HAVE SPARE TIRE, WILL TRAVEL

BY VAN & BEV
BECKER

Here I sit. Two weeks before the editorial deadline and the middle of Memorial Day weekend. This Memorial Day is extra poignant, having recently lost my father (1917-2007). Remembering our lives together included snippets of Lincoln Highway-related family tales. Perhaps you will enjoy a quick review. I'll try to keep them brief.

In the mid-1920's, Grandfather would take his family, including my dad and his brother, fishing on long summer weekend campouts. The two boys were approximately ages 8 and 9. The trips usually consisted of Davenport to DeWitt and west on the Lincoln Highway to the Wapsi River. In among the old bridges we treasure today the boys learned why carp are not the fish to keep regardless of their size. There were also told tales of the Lincoln Highway leading **all the way** to California. Knowing that California had recently hosted the World's Fair and hearing tales of the size of vegetables grown there as well as the 2000-miles-away ocean, the boys were fascinated.

Between camping and fishing, I can visualize two young boys standing in the middle of the gravel road looking west trying to see or imagine the mountains and then the ocean. A coast-to-coast highway to young boys in the 20's must have seemed as fascinating and improbable as space travel is today.

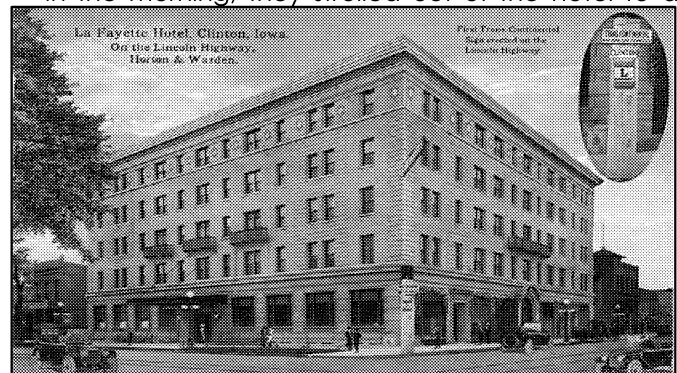
Dad also told of finding the best way to stop a leak in the roof of the old Oakland phaeton—chewing gum! But it works best when pressed into the offending holes from both sides of the roof. Since he was the youngest and the leak only showed up when it was raining, he was usually the one elected to press the gum down from the wet topside.

During the 1930's, the young man yet to become my father, was working as an accountant by day and a professional musician on weekends. He spent many weekends traveling the Lincoln Highway in the "band bus." Often there were gigs at the Hiway Gardens in Stanwood, Iowa. In those early years, the sax player often earned only 50 or 60 cents for the whole night including travel time. The band could have afforded two more

musicians, if not for the cost of gasoline to travel the Lincoln Highway from Davenport.

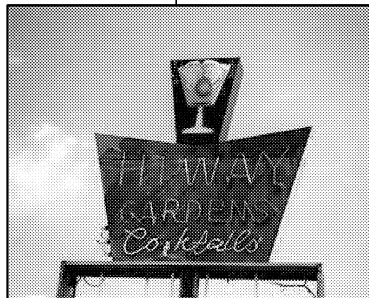
I caught his band one evening in the early 70's at the old Armar Ballroom on the original 1913-1919 route on the boundary between Cedar Rapids and Marion. By the mid-40's it was time for marriage. Gas and tires were rationed due to the war, but extra gas coupons appeared as wedding presents. The tires on the old four-door '40 Plymouth sedan were judged good enough for the trip from Blue Grass near Davenport to Clinton. Yes, my parents spent their honeymoon at the Lafayette Hotel in Clinton, the Lincoln Highway Control Point in downtown Clinton, Iowa.

In the morning, they strolled out of the hotel to a



little "tearoom" across the street located about where the photographer was standing for the above photo. After being charged **50 cents** each for coffee in the 1940's, the two newlyweds assumed they paid for the cups too. I have that pair of cups in my kitchen yet today.

In later years, early 1950's, I was taken fishing at Crystal Lake. This was a lake made by damming a stream 2 ½ miles west of DeWitt. Early maps and Lincoln Highway road guides indicate that there were free campsites and fishing at Crystal Lake just 2 ½ miles west of DeWitt. It was designated as a free city campground for travelers. I have memories of bathhouses and cabins on Crystal Lake. Somewhere in the stacks of family photos there are photos of three generations of Becker's in an old rowboat on this small lake.



(Spare Tire Continued on Page 5)

Ramblings Along the Lincoln Highway.

*Minutes of the Spring 2007 Iowa LHA Meeting
 Belle Plaine Historical Society Museum
 Belle Plaine, Iowa
 14 April 2007
 Submitted by Jeff Benson, Secretary.*

President **Keith Whitlatch** called the meeting to order at 9:45 a.m.

Belle Plaine City Administrator **Bill Daly** began the meeting by welcoming the group and reviewing the community's many assets.

Minutes of the January 2007 Board Meeting- held January 13, 2007 were approved as published in the Spring 2007 issue of *Along the Lincoln Highway*.

Treasurer's Report- **Joyce Ausberger** reported a checking account balance of \$3169.91 and an investment account balance of \$5263.45 and the following details for the three months:

Income		Expenses	
Afghan sales	\$ 105.00	Donation to LHA Endowment Fund	\$ 500.00
Memberships	\$ 310.00	Donation to Harrison County	\$ 500.00

No new membership activity since January meeting.

State Director's Report- **Jeff LaFollette** reported as follows: Presented national budget report, showing national conference hosted by Iowa as major component

Sent letter to the editor on the errors on the Dewitt plaque

Status of the naming of the new and existing national offices

Jeff LaFollette was unanimously nominated to a second term as State Director.

Newsletter Editor Report- Discussed recent changes in the newsletter format. **Kathy Dirks** thanked **Jeff LaFollette** for his work on this.

Business Items

1. **LHA Endowment Fund-** The Funds provides grants to local groups for Lincoln Highway projects. Projects from Illinois, Ohio and California have been sent to the grant committee to consider for 2007. Discussed potential for grant projects in Iowa for 2008 and the process and criteria. County consuls should send grant applications to **Bob Ausberger**. Applications will be due by March 2008.

2. **National Archives-** **Lyell Henry** still working on getting Iowa archive information to the national archive in Michigan and is seeking guidance from Michigan on appropriate materials.

3. **Iowa Lincoln Highway Heritage Byway-** **Jeff Benson** reported on progress getting counties' and cities' approval of the route, with majority of the counties and more than 30 of the cities already having approved the route.

4. **River-to-River Road Run.** The tour will be August 8, 9, 10, 2008. **Jeff LaFollette** and **Tammy Loving** reported on their survey of the first day's route.

5. **Joint meeting with Illinois LHA.** **Jeff LaFollette** confirmed details of the May 12 meeting at Franklin Grove, Illinois. Needs count of attendees by May 1.

6. **Tama Catholic Church.** Still need offer from non-profit group. The land south of the famous Tama Lincoln Highway bridge may also be for sale, including the land with the easement for half of the bridge.

7. **Chelsea Bridge.** This bridge on the Lincoln was demolished but some of the more historic-looking pieces were put in storage (by the City or the County).

8. **Single Post Canopy Gas Station in Stanwood.** It is available for \$40,000 (which also includes a metal building on the property). The interior has been gutted and many of the architectural elements on the exterior have been obliterated, including the original single post. **Van Becker** said he would not recommend purchasing this. **Keith Whitlatch** suggested a private party could donate the money needed to purchase it through the ILHA.

Regarding the previous three discussion items, **Van Becker** suggested there needs to be further Board of Directors discussion on the issue of the Iowa Lincoln Highway Association owning real estate and President **Keith Whitlatch** agreed. An agenda item at the July Board of Directors meeting will be the pros and cons of real estate ownership by the ILHA.

Highlights from County Consul Reports:

Linn County – There was some vandalism on one of the new interpretive kiosks. Another Boy Scout has agreed to build two more kiosks.

Benton County – Youngville Station will open in May fro the season.

Story County – Niland's Café has closed again.

Harrison County – A Statue of Liberty at the library on the Lincoln Highway is being restored.

Other Business

1. Discussed having educational programs at one or two of these meetings a year and not having a business meeting.

2. The July Board of Directors meeting will be on July 14, 2007 at Lisbon History Center, with lunch at Bailey's Café in Lisbon.

The meeting was adjourned and lunch was at the Lincoln Café, followed by a tour of various historical sites and properties in and around Tama. **L**

THINGS TO DO AND HAPPENINGS ALONG THE LINCOLN HIGHWAY

There's always something going on along the Lincoln Highway and with summer in full swing, the communities along the road have festivals and events going on. This will be a new feature in "*Along The Lincoln Highway*" If your community has an event to promote, please contact our webmistress, **Sandii Huemann-Kelly** at shk@videoportraits.com She will be happy to post event on our site. I apologize to those communities that have had events already this year, but we will make every effort to get them printed in the future newsletters. Below is a list of happenings from July to September.

June 30 - July 1, 2007 Clarence Lincoln Highway Festival Clarence: Lincoln Highway parade, car cruise, tournaments, bake-off, live music, Sunday church services in the park, watermelon feed. More Info: (563) 452-3291.

July 6-7-8, 2007 Clinton Riverboat Days Festival Clinton: Held at Riverview Park. One admission price includes family attraction, concerts with headline country and rock entertainers. More info: (800) 395-7277 or (563) 242-7052 or www.riverboatdays.com

August 3-4-5, 2007 Lowden Sesquicentennial (150th Anniversary) Parade. More info at www.cityoflowden.org 150th Celebration Schedule or contact Joe Goodlove (2goodloves@fbcom.net)

August 24-26, 2007 Lincoln Highway Days: Nevada Parade, rodeo, dance, carnival, antique tractor pull. At Story County Fairgrounds. More Info: (515) 382-6538.

September 6-9, 2007 Jumbo Well Days: Belle Plaine L

Name that Lincoln

This is a fun little thing I'd like to try out occasionally in the newsletter. "Name That Lincoln Highway Spot" Take a look at the picture and try to guess where this spot is located along

The Lincoln Highway. One clue: it is in Iowa. I won't go outside the state unless I tell you so. We are sorry, there are no prizes, just the glory of making the correct guess. So give it your best shot and send me an e-mail with your guess. All those who guessed correctly will be listed in the next issue. Send your guess to jefflaf@peoplepc.com L



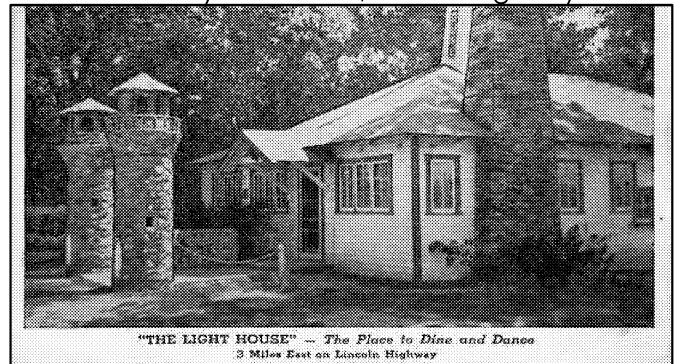
(Spare Tire continued from Page 2)

In the mid-1950's—family vacations with my little sister Kay. She finally turned out pretty well, but what a pain back then! When traveling north, the first mandatory stop was the water tower park with restrooms in DeWitt. Dad would park the car right about where the new brass misinformation Lincoln Highway plaque stands today. Kay's restroom and carsickness stops really slowed us down!

When traveling west for family vacations in Colorado, Dad would head the 1950 Plymouth Deluxe west on Highway 6 and jog north to the Lincoln Highway at Belle Plaine. A gas stop at Preston's Station always seemed in order. The first year the family vacationed out west, Dad had promised me—probably to shut me up—that we would stop at an "antique car museum" – if I was good. Hey, I was only about 8-9 years old. The stop at Preston's with the old threshing machine, a few old Model T Fords and a nifty museum convinced me that we had arrived at the promised auto museum. I didn't want to leave after the fill up.

Finally, with me living and working here in Cedar Rapids, both Dad and I gravitated to "the old highway" for our regular trips to visit one another. It might have been slower than I-380 and I-80, but as we all know, it has been a lot more interesting. When visiting Cedar Rapids, Dad's favorite place to eat was the old roadhouse, the Lighthouse on the Lincoln Highway, host to John Dillinger and the home of great barbecued ribs.

Memorial Day—Memories, Lincoln Highway memo-



ries— Thanks, I had to share.

Drive safely—keep the shiny side up. L

BURMA-SHAVE JINGLES

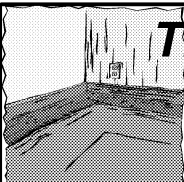
Pity All -The Mighty Caesars- They Pulled- Each Whisker Out- With Tweezers- Burma Shave (1934)

You Know- Your Onions- Lettuce Suppose- This Beets 'Em All- Don't Turnip Your Nose- Burma Shave (1935)

Speed- Was High- Weather Was Not- Tires Were Thin- X Marks The Spot- Burma Shave (1948)

The President's Corner

By Keith Whitlatch, ILHA President

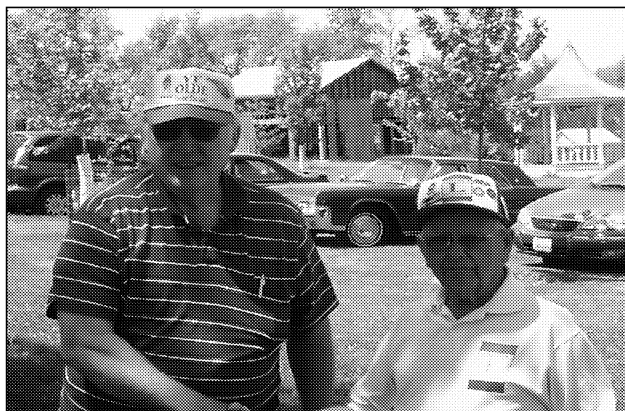


On Saturday, May 12, Lois and I took a little trip across the "Mighty Mississipp". We attended the meeting of the Illinois Chapter of the Lincoln Highway Association as guests from Iowa's chapter.

We followed Highway 30 till we got into Illinois a little. Just prior to the big horse farm on Highway 30, we turned off and followed the marked Lincoln Highway. The markings were great and I didn't get lost until I made a wrong turn in Dixon. We saw parts of it that I'm sure the average tourist never sees. I finally listened to Lois's suggestions and we got back on the right track. As we got close to Franklin Grove we drove by a lot with rusting farm implements, much of which is Minneapolis Moline equipment. I'd been to Franklin Grove before, so seeing the machinery is like seeing old friends.

Our initial destination was the National Lincoln Highway Headquarters. I feel like a "kid in the candy store" there. Lynn Asp was our gracious hostess. They have a lot of memorabilia to purchase, books on the highway and a lot of crafts to sell as well. It is a delightful, historic place.

Then we headed out to the Chaplin Creek Village on Whitney Road, south of Franklin Grove. This is a beautiful area of 63 acres of grass and trees, and a recreation of the original little town of Chaplin Creek. The buildings were all donated and have been moved to the site. Yes, they even have a jail. I was locked up briefly but got out on good behavior. As an active member of the Cedar County Historical Society, we were very impressed with the amount of work they have already done, and are still doing. We know how much financial help and volunteer labor is required to accomplish the great amount they have already done



I was greeted to the meeting by Illinois President, Wayne Silvius. Besides being presidents of our respective state's Lincoln Highway Association, we found we

are both long-time active Lions club members. Wayne has a special license plate honoring the 90th anniversary of Lions Clubs this year. The International Lions will be celebrating their 90th anniversary in Chicago on July 4. Lions are 90 years old, Wayne will turn 80 this summer, and I will turn 70.

While Wayne conducted the Illinois Chapter meeting, us "foreigners" were given a guided tour of the grounds by local historical society members, in costume. There's an old house that was moved in three pieces, two barns – one which will be turned into a theater, a blacksmith shop, schoolhouse, and a building that will eventually be a church. Other buildings include a log cabin, the old jail and newspaper office. They hold an annual celebration the first week-end of August, called "The Franklin Grove Summer Harvest Festival". This year it will be held August 4 and 5. Following our tour and the Illinois Chapter meeting we were served an excellent meal of pork chop sandwich, baked beans, applesauce, cookies and drinks. One of the surprise guests there that day was "Redbird Express".

After eating, we were entertained by the Franklin Grove Boys. One of the "Boys" was Lynn Asp, from the National Lincoln Highway Headquarters. I understand they perform on a regular basis at the Headquarters building. I would consider their music "quality" bluegrass music. I didn't ask if they had cut any disks. They did make "great music" together.

One of the other members of the "boys" is Jim Wolbers. Jim plays guitar and bull fiddle, and has a great singing voice besides. For a living Jim raises, trains and shows Belgian draft horses, another of my "favorite things". He invited me over to his farm afterwards, where he has 50 horses he is working with. He showed me pictures of some of his champions. Jim drives 2, 4 and 6 horse hitches, and showed off with his newest 4 horse hitch. What an exciting end to a great day in Franklin Grove.

We had a quality turn-out from Iowa, but not quantity. Only 8 lowans came, but those who were there really felt it was an educational and enjoyable time. I thank Wayne and his Illinois LH members for their wonderful hospitality. Even the weather participated in being perfect for an outdoor meeting and picnic. Hopefully our paths will cross again somewhere on the Lincoln Highway. By the way, I personally appreciated the street signs in the town. They were red, and each one sported a Lions insignia.

Keith

LINCOLN HIGHWAY ENDOWMENT FUND 2008 GRANT PROGRAM

By Jeff LaFollette, Iowa LHA State Director

In 2005, the National Lincoln Highway Association received a very generous, anonymous, and unrestricted gift of \$100,000. An LHA Endowment committee was formed. The committee quickly became convinced that at least a portion of this gift should serve as a "seedling fund" to honor the generous donor of this contribution. This is being done by supporting exciting projects along the Lincoln highway and by encouraging additional contributions to the fund—just as the original LHA's "seedling miles" provided the impetus for further improvement to the Lincoln Highway.

Grant awards are being made available from the Lincoln Highway Association Endowment Fund for the purpose of furthering the Lincoln Highway cause and for assisting state LHA chapters in their efforts. State chapters are encouraged to develop projects and to seek grant awards to support these projects.

The Lincoln Highway Association Board of Directors (at the national level) will annually determine a dollar amount to be awarded to successful applicants, based on budget recommendations of the LHA Endowment Committee. Awards will be made at the Association's annual conference each year. The first round of grants were awarded at the Fort Morgan conference. Two states submitted applications this year, Iowa was not among them this year. The number of awards to be made annually will be at the discretion of the Endowment Committee but will typically be two in number each year. A maximum \$5000 award may be made to any applicant in any one year. Applicants may apply each successive year for multi-year awards, thus if successful, increasing the total award for a given project to an amount in excess of the \$5000 annual limit. The Endowment Fund grant program will be administered on an annual "grant round" basis, with each grant round beginning the day following the LHA annual conference and ending at the time during the conference when grants are announced for the next year.

Applications are due not later than March 1 each year. Applications are to be submitted to the chair of

the LHA Endowment Committee. Applicants do not need to complete any special or mandatory form of application, although an application shall be a type-written submittal that addresses the relevant scoring criteria set forth below. In other words, an applicant should fully explain how its proposed project satisfies any or all of the Scoring Criteria. Application submittals shall be limited to five single spaced pages. As appropriate, attachments will be considered, but the LHA Endowment Committee generally has expressed a preference for precise, rather than lengthy applications.

If you have a worthy project that you want to have considered for a grant in 2008, contact me either by phone or e-mail and I will send you a complete copy of the Grant Applications and Awards Program Sheet so you can look it over, and check the scoring criteria, and read over other items to help you in preparing your application. When you complete an application, you may mail it to me, and I will make sure that it gets to the Endowment Committee Chair. This is an important task, one that I take seriously as a State Director.

You may also contact the Endowment Committee Chairman, Bob Dieterich. Bob lives at 4521 Woodmont Ct. Fair Oaks, CA 95628. He can be reached by phone at 916-967-7680 and his e-mail address is bobd@sbcglobal.net. Bob Ausberger of Jefferson, IA is a member of the Endowment Committee and would be most helpful to you as well His phone number is 515-386-4821 and his e-mail is bojjoyce@netins.net

We hope to have someone from Iowa apply and receive a grant at the 2008 National Conference in Evanston, Wyoming. Don't forget, if you have any questions regarding the grant applications, contact us soon. The time to get started for 2008 is now! **L**

See YOU on the Lincoln Highway! This issue's new members.

George Crouse	Carroll, Carroll L
Goodlove Museum	Lowden, Cedar L
Dr. E.E. Houk	Jefferson, Greene L
Steve Mumm	Westside, Crawford L
Petro Mart Travel Ctr.	Missouri Valley, Harrison L
State Center Development	State Center, Marshall L
Marvin Shriver	Jefferson, Greene L
Kevin Torgeson	Radcliffe, Hardin
Tracey Wellendorf	Carroll, Carroll L
Myron & Marquitta Gershenson	Pacifica, CA
Mary McHugh	Columbus, NE

L (Denotes a Lincoln Highway County)

Upcoming LHA State Meetings

July 14, '07	Lisbon (Linn Co.)
October 13, '07	Ogden (Boone Co.)
January 12, '08	To Be Announced
April 12, '08	To Be Announced

**ILHA Officers,
Board of Directors
(County Consuls),
and Staff**

Officers

- President**
Keith Whitlatch (563) 942-6670
- Vice-President**
Kathy Dirks (712) 755-7474
- Secretary**
Jeff Benson (515) 233-1445
- Treasurer**
Joyce Ausberger (515) 386-4521
- State Director**
Jeff LaFollette (563) 349-3047

**Board of Directors
(County Consuls)**

- Clinton County**
Jeff LaFollette (563) 349-3047
- Cedar County**
Keith Whitlatch (563) 942-6670
- Linn County**
Van & Bev Becker
lowaLHA@mcleodusa.net
- Benton County**
Mike Kelly (319) 472-5183
- Tama County**
Allan Richards (641) 484-4981
- Marshall County**
Catherine Noble (641) 483-4044
- Story County**
Margaret Elbert (515) 233-1445
- Boone County**
Joe Moore (515) 432-6174
Ed Mondt (515) 432-2343
- Greene County**
Bob Owens (515) 386-3419
- Carroll County**
VACANT
- Crawford County**
VACANT
- Harrison County**
Elaine Ehlert (712) 647-2049
- Pottawattamie County**
Brett Ford (712) 545-3283

Support Staff

- Membership Coordinator**
Cecil Stewart
- Newsletter Editor**
Jeff LaFollette
- Noble Sojourner**
Lyell Henry
- Iowa Artist in Residence**
John Fitzsimmons
- Webmistress**
Sandii Huemann-Kelly
shk@videoportraits.com

**PHOTOS FROM THE ILLINOIS-IOWA
LHA GET TOGETHER IN
FRANKLIN GROVE, ILLINOIS
MAY 12, 2007**



(Left) Replica wooden LH marker inside the west entrance of the Lincoln Highway National Headquarters, in Franklin Grove, Illinois .



(Right) Welcome kiosk to Chaplin Creek outside of Franklin Grove, where the picnic was conducted between Iowa and Illinois LHA groups.



(Left) Clockwise from bottom: Keith Whitlatch, Lois Whitlatch, Tammy Loving of the Iowa Lincoln Highway Association and Carl Jacobsen of the Illinois LH enjoy the surroundings, beautiful weather and music at the Chaplain Creek area.

(Below) The Lindsay Saltbox House at Chaplin Creek, an 1840 homestead recently brought to Chaplin Creek and is currently the process of interior restoration.



(Above) The Franklin Grove Boys, a local group playing country, bluegrass and gospel music. The band entertained the Iowa and Illinois LHA members. On the right is Lynn Asp, the director of the National LH Headquarters. Yes, Lynn is one of the "Boys" but only in the band.

LISBON—THE HOT SPOT FOR THE SUMMER ILHA MEETING

The summer is heating up, and the Iowa Lincoln Highway Association will be warming up to Lisbon for the Summer 2007 meeting. The next meeting will be conducted on Saturday July 14, 2007 at the Lisbon History Center located at 110 S. Washington St in Lisbon. The History Center is located just south of the old Lincoln Highway (Main Street) Coffee, homemade kolaches and donuts will be available at 9:00 AM. Then, President Whitlatch will drop the gavel around 9:30 AM to begin the business meeting. After the meeting we will enjoy lunch at Gwen's Restaurant at 119 W. Main St., about two blocks from the History Center. You can order off the menu or choose the buffet. This meeting is a business meeting, so there will not be a tour afterwards. However, President Keith is inviting everyone to come to the Cedar County Fair in Tipton after the meeting and he will give you a free trolley ride! We invite you to come out and join us and get to know your Lincoln Highway Association. As members, your input is important to our success, and we welcome all of our members to attend our meetings. So, come out and take a leisurely drive to Lisbon and Linn County for a day of fun and fellowship and see one of the many beautiful sections of the Lincoln Highway in Iowa. We hope to see you there! L

FROM THE EAST: Follow the Lincoln Highway westward toward Lisbon, At the Cedar-Linn County Line, the Lincoln will angle to the right. Follow the road (Main St.) into downtown Lisbon. Turn Left at Washington St. and look for the Lisbon History Center.

FROM THE WEST: Follow U.S. 30 eastbound into Lisbon. You will be on the south edge of town. Look for South Washington Street and turn left. Follow Washington St. about two blocks and look for the History Center.



1928 Marker on Main Street, Lisbon

In This Issue...

Van's Tribute To His Father & Keith's Review of Franklin Grove

FIRST CLASS

Iowa Lincoln Highway Association
P.O. Box 14
Ogden IA 50212